

MAKEUP BY: JOE ROSSI & COMPANY, Providence, RI

FIG. 4

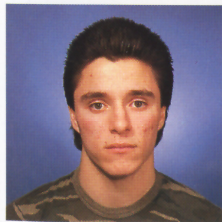


FIG. 1

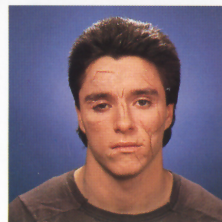


FIG. 2

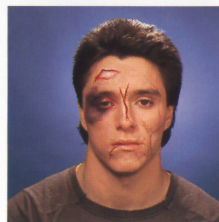


FIG. 3

**Basic Items Required:**

Spirit Gum & Remover  
Stage Blood  
Rigid Collodion  
Makeup Remover Cream  
Mehron's Tri-Color Bruise Makeup Palette

Modeling Wax or Putty/Wax  
Stipple Sponge  
Red Makeup



## SCARS, CUTS AND BRUISES MAKEUP APPLICATION

### BLACK EYE AND FRESH CUT

- A. Apply a thin layer of spirit gum where modeling wax will be applied. Allow to dry.
- B. Sculpt thin layers of modeling wax over areas to appear swollen and cut (Figure 2). Make sure the edges blend into skin. Once edges are blended, smooth surface with fingers coated with cleansing cream. Smooth wax can be textured with a stipple sponge.
- C. Base with an appropriate skin shade or with purplish colors for bruise (Figure 3).
- D. If desired, cut into wax and redden with makeup and stage blood (Figure 4).

### HEALED SCARS

- A. Apply rigid collodion to the skin in fine lines where you want scars to appear (Figure 2). This material must be applied to clean skin (no base or moisturizer). Rigid collodion will shrink and pull the skin into a puckered scar shape.
- B. Another layer of rigid collodion may be applied when dry to deepen the "scar".
- C. Color the depression with a light pink cheek color (Figure 4).

*Hints:*

Lines should be thin and allowed to dry before a second coat is applied. Keep away from eye area.

**HAVE FUN!**