

MAKEUP BY JOE ROSSI & COMPANY, PROVIDENCE, RI

Figure 4



Figure 1



Figure 2

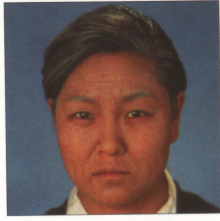


Figure 3

**Basic Items Required:**

- **Base Tone** (TV8)
- **Shadow Tones**  
(Shadow-Liners No. RC11 or 8)
- **Highlights**  
(Shadow Liners No. 17 or 18)

- **Hair White**
- **Colorset Powder**
- **Liquid Latex**
- **Sponges**
- **Brush**

COMPLIMENTS OF:



## OLD AGE/ASIAN MAKEUP APPLICATION

**A.** Figure 1 shows our model in glamour makeup. Age makeup should be applied over clean, bare skin. If latex will be added over the finished painted makeup, keep the base to a minimum. Cover face with appropriate skin tone base, choosing foundation according to natural skin tone or according to "character" requirements. Warm bases suggest health, cool tones appear sickly. We have used base No. TV8.

**B.** Highlight all full or bone areas of the face with a highlight that is a tone lighter than the base. Notice that the bone structure areas are highlighted. To add to the realism of the painted wrinkles, highlight against the hard edge of each. Also, full areas such as cheeks, jowls and double chins should be highlighted (Figure 2).

**C.** Apply shadow tones to hollow out areas and to create wrinkles (Figure 3). Note that all shadows and wrinkles have a "hard edge", that is a somewhat unblended edge, and a soft edge which is blended completely into the base. Study the blending direction in our photos. Hair has been pulled back and grayed with hair whitener. Add final details. Powder the makeup with Colorset Powder.

**D.** Three dimensional wrinkles are shown in figure 4. This effect is achieved by applying liquid latex over the finished makeup. To create 3-D wrinkles stretch a section of the face. Apply latex over the stretched skin. Dry with a blow dryer set to warm. When the latex has dried it becomes a semi-clear skin. At this point the surface is still sticky. Powder the latex before releasing the stretched skin. Continue on to another area. When the face is finished the powder can be removed with a damp sponge. Do not apply makeup over latex. A wig has been used to complete the look. If no wig is available, hair whitener can also be used.

**Hints:**

- Test latex on a small area of the skin before use. If burning or redness develops, discontinue use.
- Do not get latex in hair or on clothing. Dry latex will peel off skin but will stick to hair. Dry latex cannot be dissolved. If working over eyebrows or near hairline, cover the hair with modeling wax.
- Dry latex has a sticky surface. You should powder each area after you dry it.
- To remove simply peel off. Difficult areas can be loosened by washing with warm, soapy water. Do not use oily removers on latex.

**HAVE FUN!**