

Makeup for...  
**#HALLOWEEN**



Parties • Face Painting • Fantasy • Masquerade  
Festivals • Mardi Gras • School Events



# Makeup is FUN!

## Easy To Apply!

Mehron makes it so very easy to create a great looking character! From our Color Instruction Sheets to our Tri-color Palettes, Mehron shows and explains step-by-step how to achieve a spectacular effect. It's fool-proof and fun! Our catalog is loaded with ingenious ideas and great tips to help you turn all your makeup designs into reality.

## Safe!

Mehron has been making performance makeup for 70 years and is proud to be a family owned American company. Our manufacturing standards exceed all United States F.D.A. requirements so that our customers are guaranteed products made of the safest ingredients available.



**Alan E. Ostrander**, creative makeup designer and special effects artist for **TERROR ON CHURCH STREET** in Orlando, Florida (the country's largest, permanent haunted attraction), is our featured technical expert. He has worked extensively throughout the United States and abroad in live stage, film and television. For the past seven years, Alan has been the head makeup designer for **TERROR ON CHURCH STREET** while running **AEO Studios**, a full-service makeup/effects facility. Alan is shown here applying finishing touches with **MEHRON'S NEW Bruise ProColoring™** to his "ripped off face" design (easily achieved with **MEHRON'S** innovative **Blood Red 3-D Gel™**). Unless otherwise noted, Alan created all character designs and tips in this Makeup for Halloween catalog.



# Fantasy F/X™

America's favorite face paint, **Fantasy F/X™**, provides superior color and is as easy as 1-2-3 to apply and remove (washes off with soap and water). Our safe, non-toxic formula comes in twenty-four vibrant colors and is perfect for face painting, sporting events, carnivals and Halloween.

1 fl. oz. (28 mL.) No. FFX



Top row L to R: Black (B), Wolfman Brown (WB), Orange (O) Creole Brown (C), Soft Beige (F), Monster Grey (MG),  
 Bottom row L to R: Purple (P), Green (G), Red (R), Yellow (Y), Blue (BL), White (W), Glow-in-Dark (GL), Moonlight White (MW),  
 Gold (GD) Silver (S) and **NEW!** (not shown) Bergundy (BY), Liberty Green (LG), Kelly Green (KG), Navy Blue (NB), Teal (T),  
 Zombie Flesh (Z), Copper, (CP) and Bronze (BZ)

## Bruise ProColoring



## NEW!

### Bruise ProColoring™

The perfect tool for making realistic looking bruises in a flash. Simply layer these colors with a stipple sponge.

1 oz. (28 gm.) No. 505-B

## fips

Fresh bruises are very red, then gradually change to maroon and finally yellowish green. Drag a stipple sponge dipped in burnt maroon over makeup to create fresh scrapes and cuts.



S  
T  
E  
P  
S



S  
T  
E  
P  
S



S  
T  
E  
P  
S





# Liquid Makeup



## Liquid Makeup (face, body & hair paint)

Film, television and stage professionals around the world rely on our unique, water-soluble formula. Easy blending and quick drying (with no cracking!) make **Liquid Makeup** a breeze to use for face painting or full body coverage.

1 fl. oz. (28 ml.) **No. 111-1** (also 4.5 and 16 fl. oz.) Carded **No. 111-1C**



## tips

**Liquid Makeup** can be applied with a brush or, for larger areas, a sponge may be used. Always start with a small amount of makeup and add more to create effect. Let one color dry before painting over it with another color. Spray **Barrier Spray™** over finished makeup design for longest lasting results.

## Colors for Body & Hair



# Stage Bloods

All Mehron simulated blood products wash off with soap and water!



Stage Blood

Dark Blood

*fips*

3-D Gel™ may be built up in layers — just allow to cool before adding more. Paint vivid makeup colors on skin before applying gel to create a 3-dimensional effect. Great for veins and arteries. Test temperature on inside of forearm.

## Buckets of Blood!

- A. Stage Blood:** Our viscous, lifelike blood is non-toxic and so safe it's edible. Can be used in and around the mouth. 1 fl. oz. (30 mL.) w/brush **No. 152** (also .5, 4.5, 9 and 16 fl. oz.)
- B. Dark Blood:** Now available in a venous color. 1 fl. oz. (30 mL.) **No. 152D** (also .5, 4.5, 9 and 16 fl. oz.)
- C. Squirt Blood:** A water-based (not syrup) blood for great gushing and squirting effects. .5 fl. oz. (15 mL.) **No. 150 • Dark Squirt Blood No. 150D** (also 2 and 9 fl. oz. in both colors)



- D. Coagulated Blood Gel:** Thick blood which truly stays in place. A spatula is included for easy application. 1 fl. oz. (30 mL.) **No. 151 • Digestible Blood Capsules (not shown) 12 pack No. 152-CAP**



# Rigid Collodion



## Rigid Collodion (scarring liquid)

A clear solution that wrinkles the skin as it dries, creating a scar effect. Repeat application to deepen the effect. Remove by peeling off. Spot test a small area on the skin. .25 fl. oz. (7 mL.) w/brush **No. 204RA** (also 1 fl. oz.)

# 3-D Gel

## 3-D Gel™

The most ghoulish effects (torn flesh, burns, zombies) are created with 3-D Gel™. Heat for a few minutes to a liquid form (just toss bottle into a cup of hot water) and brush it on. No adhesive needed. Removal from skin and hair with warm water makes 3-D Gel™ a perfect alternative to latex for use on children.

**2 fl. oz. (60 mL.)**  
**Flesh: No. 142-2**  
**Blood Red: No. 142-R2**  
**Carded .5 fl. oz. (14 mL.)**  
**Flesh: No. 142**  
**Blood Red: No. 142R**



# Latex Liquid



# fips

Apply **Latex Liquid** in thin layers, allowing each to dry before applying the next layer. Build up to desired thickness. **Latex Liquid** can then be powdered and torn open for hanging flesh. **Latex Liquid** can also be used to adhere cotton balls, oatmeal or tissue to the face. Then cover with another layer of latex to attain a 3-dimensional effect of rotting flesh.

## Latex Liquid

**Latex Liquid** is used to create unusual skin textures or to apply **Crepe Hair** and prosthetics. Colorless when dry; may be covered with **Mask Cover** (shown below) to design a character. Requires no remover; simply peel cured latex from the skin. Avoiding getting latex into hair or clothes. To protect sensitive skin, use **Barrier Spray** under latex. Caution: Do not freeze latex or expose to direct sunlight.

1 oz. (30 ml.) **No. 117** (also 4.5, 9 and 16 fl. oz.)  
Carded 1 oz. (30 ml.) **No. 117C**

## Tinted Liquid Latex

Light Flesh "Soft Beige" (L)  
and Dark Flesh "Sable" (D)  
1 oz. (30 ml.) w/brush **No. 117L or D**  
(also 4.5, 9 and 16 fl. oz.)  
Carded **No. 117LC and No. 117DC**

## Modeling Putty/Wax

Create three-dimensional facial features. For extra adhesion, apply **Spirit Gum** first. Seal with **Fixative "A"** before applying makeup.

1 oz. (28 gm.) **No. 140**  
Carded .5 oz. (14 gm.) **No. 140C**  
**NEW!** Carded with Fixative "A"  
.5 oz. (14 gm.) **No. 140F**

## Modeling Wax

A soft, supple wax for building up facial areas, blocking out eyebrows, and smoothing the edges on prosthetic pieces.

1 oz. (28 gm.) **No. 139**

## Extra Flesh™

Simple to use; just rip off a chunk, dab it on and blend it out.

Carded 3 oz. (8 gm.) **No. 141**  
**NEW!** Carded with Fixative "A" 3 oz. **No. 141F**

## Mask Cover™ Makeup

Mehron **Mask Cover™** is the premier choice of professional special effects artists for its incredible effectiveness in covering latex and rubber prosthetics, bald caps, etc. Provides complete coverage and easy blending necessary for realistic results.

Light Olive (0S2), Mid-Lite Olive (0S4), Medium Olive (0S6), Mid-Dark Olive (0S8), Dark Olive (0S10), Soft Beige (TV4), Light Tan (TV6), Bronzed Tan (TV10), Oriental (16B), Ebony (10C), Black (B), Nat. Beige Blush (25A), Lt. Cinnamon (28A), Ruddy Bronze (30A), American Indian (10B), White (W), Green (G), Yellow (Y), Red (R), Blue (BL) and Monster Grey (18B).

1 oz. (28 gm.) **No. 102LM**

## Castor Sealer

For use as a protective coating for latex and rubber prosthetics and bald caps. Allows the use of non-castor oil based cream makeups.

1 oz. (30 ml.) **No. 117S**



## Fixative "A"™

Clear liquid plastic sealer forms a protective surface film over **Modeling Wax** and **Modeling Putty/Wax** before makeup is applied. **Fixative "A"™** seals intricate makeup designs, making them appear like tattoos.

.25 fl. oz. **No. 144A**



## Mask Cover™ Palette

Contains 15 of the most useful shades of **Mask Cover™**.  
3.75 oz. (105 gm.) **No. 102LMP**

# Barrier Spray



Our finest formula of anti-perspirant powder comes in a convenient shaker. Neutral/Translucent (T), Soft Beige (F) and Ultra White (W)  
.6 oz. (17 gm.) No. 136

# Colorset Powder



## Ultrafine Powder Shaker



## Colorset™ Powder

A super absorbent, translucent formula perfect for setting any cream makeup.  
1 oz. (28 gm.) No. 135 .25 oz. (8 gm.) No. 135P Carded .25 oz. No. 135PC

## Barrier Spray™

Seal your makeup design with this wonder spray... it's a favorite tool of professional makeup artists. **Barrier Spray™** can be used under makeup to stop sweat and to insulate sensitive skin (from **Spirit Gum**, **Latex** or other adhesives) or misted over makeup to set and preserve it (after applying **Colorset™ Powder**).

2 fl. oz. pump bottle (60 ml.) No. 145  
Carded 1 fl. oz. pump bottle (30 ml.) No. 145C

# Spirit Gum

## Spirit Gum Remover

A specially-developed solvent for removal of **Spirit Gum**. Gentler to the skin than most other removers.  
1 fl. oz. (30 ml.) w/brush No. 143P  
(also 9 fl. oz.)

## Matte Spirit Gum

**Spirit Gum** which dries to a matte finish.  
1 fl. oz. (30 ml.) w/brush  
(also 4.5 and 9 fl. oz.) No. 118M



## Crepe Hair

12" tightly woven braids of wool used to create beards, mustaches, sideburns and special effects. **Crepe Hair** is applied with **Spirit Gum** or **Latex** and can be "painted" with **Liquid Makeup** or **Hair White**.  
Lt. Brown (LB), Med. Brown (MB), Dk. Brown (DB), White (W), Black (B), Auburn (A), Blonde (BD), Lt. Grey (LG), Med. Grey (MG) and Dark Grey (DG).  
No. 120



## Spirit Gum

An amber colored, alcohol/resin liquid adhesive for applying **Crepe Hair** mustaches and beards, wigs, fake noses and bald caps. Remove with **Spirit Gum Remover**.  
1 fl. oz. (30 ml.) w/brush No. 118 (also .25, 4.5, 9 and 16 fl. oz.) Carded .25 fl. oz. No. 118AC

# fips

To set makeup with powder, sprinkle a small amount on powder puff and gently press into makeup. Remove excess with a large blush brush. For best possible results, lightly mist **Barrier Spray™** over powdered design.

# Color Cups



*fips*

The easiest tool to use in applying cream makeup is a sponge. Cream makeup will not dry; it must be set with **Colorset Powder** to a matte finish. Makeup remover is recommended for best results.

## Color Cups™

Our superior quality, concentrated color cream makeup that provides excellent coverage with easy blending.

.7 oz. (19 gm.) No. CC Carded No. CCC

Yellow (Y), Auguste (A), Blue (BL), Monster Grey (MG), Wolfman Brown (WB), Silver (S), Clown Red (R), Clown White (W), Orange (O), Purple (P), Gold (GD), Black (B), Green (G), and Moonlight White (MW).

## Palettes



## Greasepaint Crayons

Create dazzling designs with our moist, color-rich cream crayons.

Six Pack 1 oz. (34 gm.) No. 6PG



## Color Makeup Palettes

Five vivid cream colors in a clear plastic container.

5-Color palette 1.25 oz. (35 gm.) No. 405 Carded No. 405C  
5-Color Clown palette 1.25 oz. (35 gm.) No. 406 Carded No. 406C



# Lipstick



## Lipstick

Creamy cosmetic grade lipstick in six bold colors. Black (B), Ghoulish Green (G), Blood Red (R) and NEW COLORS (not shown) – Gold (GD), Silver (S) and Purple (P).  
 .4 oz. (5 gm.) No. LS Carded No. LSC

# Metallic Powder



## Metallic Powder

Metallic Powders allows you to create dramatic designs or characters. Use dry or combine with Mixing Liquid to form a water-based metallic liquid makeup.  
 1 oz. (28 gm.) No. 129 (also .5 oz.)  
 Silver (S), Gold (G), Bronze (B), Copper (C)



## Mixing Liquid

Liquid makeup base for use with Metallic Powders. Dries completely and washes off easily with soap and water.  
 4.5 fl. oz. (135 ml.) No. 129M

# Nail Polish



## Nail Polish

Full-size high fashion grade Nail Polish in seven smashing colors to complement any fantasy or masquerade costume. Available in Black (B), Purple (P), Silver Glitter (SG), Gold Glitter (GG), Blue (BL), and Green (G).  
 Glow in the Dark (GL) .5 fl. oz. (14 ml.) No. NP Carded No. NPC

*fips* Outline the lips with Lip Liner Pencil before applying Lipstick to give a clean edge and avoid "bleeding" onto makeup.

# Glitter



## GlitterDust™



## GlitterWear™

## GlitterSpray™

Available in these fine colors: Dynamite Red (R), Shamrock Green (GR), 14 Karat Gold (GD), Deacon Blue (BL), Holographic Silver (H), Mardi Gras Purple (P), Pricilla Fuchsia (F), Real Silver (S), Opalescent White (W) (available in Dust only).



*fips*

A highlight is a lighter color used for anything you want to "stick out" from the face. Shadows are dark colors which make features recede into face.

Clean your **Stageline Brushes** with **Brush Cleaner** between colors and uses. This will keep your colors pure and your brushes in top condition.

**Sponges** are perfect for applying all base and rouge colors. The **Natural Sea Sponge** washes easily for reuse. Use a **Stipple Sponge** to apply colors very lightly over completed makeup to add texture or age spots. **Sponges** can also be cut into different shapes to make patterns (such as alien, lizard, or fish scales) over the base color.

*Cotton Swabs*

Use these specially-made swabs for pinpoint detail. **No. 125**

*Makeup Remover Lotion*

A silky smooth lotion that removes cream and grease makeup quickly and easily. Recommended for **Color Cups, Cream Makeup Palettes** and **Greasepaint Crayons**.

1 oz. (30 mL) **No. 99P**  
4.5 fl. oz. (135 mL) **No. 99**

*Latex Foam Sponge*

A smooth, closed cell foam sponge for applying cream makeup smoothly and evenly. Package of disposable wedges. **No. 121L**



*Powder Puff*

Highest quality velour puff for application of **Colorset™** or other loose powders. 3.75" **No. 123**  
**NEW!** 5" Puff **No. 123-L**

*Natural Sea Sponge*

A reusable sponge that is great for **StarBlend™ Cake Makeup** applications. Prevents streaking. Clean with soap and water. **No. 122**

*Stipple Sponge*

Open weave sponge for creating a "five o'clock shadow" beard, old age spots, bruises and other stippling effects. **No. 124**

*Hydra Foam Applicator Sponge*

Our improved foam applicator sponge is perfect for applying **Mehron Liquid Makeup**. Clean with soap and water. **No. 121**

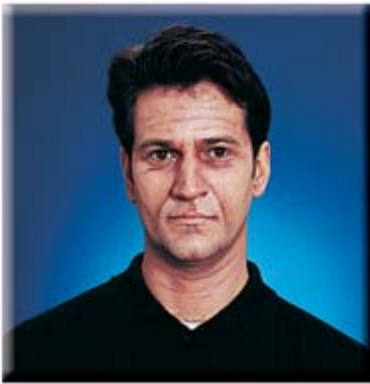
*Brushes & Applicators*

- A.** Powder/Complexion Brush: Large fluffy brush for applying dry blush, powder, and highlights or for delicately removing excess setting powder. **No. 304**
- B.** Jumbo Powder Brush: Luxuriously large professional quality duster brush. **No. 305**
- C.** Fan Duster: A fine duster to gently remove excess setting powder or to soften the edges on makeup design. **No. 330**
- D.** StageLine Brushes: The finest "Golden Nylon" bristles provide excellent resiliency and super control. Left to right:
 

(1) Shadow	<b>No. 340</b>	(6) 3/16" Flat	<b>No. 314</b>
(2) 3/8" Flat	<b>No. 320</b>	(7) 1/4" Angled	<b>No. 313</b>
(3) 5/16" Flat	<b>No. 318</b>	(8) 1/8" Flat	<b>No. 312</b>
(4) 1/4" Flat	<b>No. 316</b>	(9) Fine Point	<b>No. 310</b>
(5) 5/16" Angled	<b>No. 315</b>		
- F.** Brush Cleaner: Keep your natural and synthetic brushes clean, deodorized and "sanitized". 4.5 fl. oz. (135 mL) **No. 300**

*Applicators*





# Pencils

## Lip & Eye Liner Pencils

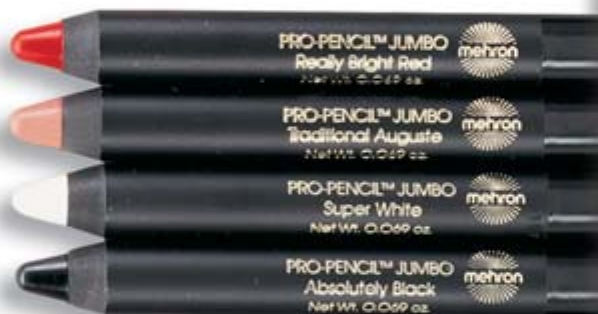
Semi-soft professional pencils for defining lips and eyes, feathering and darkening eyebrows, drawing and outlining designs and creating aging effects. Our rich formula allows easy application. Charcoal Grey (GY), Auburn (A), White (W), Lt. Brown (LB), Blue (BL), Dk. Brown (DB), Green (G) and Black (B). 7" No. 115

## ProPencil™

Our ultra-creamy, color-concentrated formula has been judged by many professionals to be the superior offering in the market. Perfect for drawing and outlining face and body designs.

**Jumbo:** Really Bright Red (RB), Auguste (A), Super White (W) and Absolutely Black (B). No. 114J

**Slim:** Absolutely Black (B), Green (GR), Super White (W), Yellow (Y), True Blue (BL) and Really Bright Red (RB). No. 114S



## Dual Sharpener

With two sharpening chambers, our stainless steel blades sharpen various sizes of makeup pencils to the perfect point; bonus built-in "cleanout stick".



## TIPS

Place liner pencils in freezer before using to prevent the tips from breaking. When drawing aging wrinkles on face, always apply over subject's natural wrinkles, (if they have any). This will avoid "double wrinkles" when making expressions.





January .....Garnet  
 February.....Amethyst  
 March .....Aquamarine  
 April .....Diamond  
 May .....Emerald  
 June .....Pearl  
 July.....Ruby  
 August .....Peridot  
 September .....Sapphire  
 October .....Opal  
 November .....Topaz  
 December .....Turquoise  
 Black Onyx

*Precious Gem Powder*

Precious Gem Powders are loose colorful powders infused with illuminating glitter flecks for extra sparkle. Precious Gem Powders are so versatile they're great for adding sparkle to eyes, lips, cheeks or just about anywhere. .17 oz. (5 gm.) **No. 203**

*AdMed Adhesive & Remover*

Text here describing AdMed Adhesive and Remover. Several Lines are OK.

1 oz. (28 gm.) **No. 105-1** • 4 oz. (112 gm.) **No. 105**



*Hair White*

Water-washable liquid for greying hair of all types. 1 fl. oz. (30 ml.) **No. 119** (also 4.5 fl. oz.)

*Hair Silver*

Water-based hair color to add silver streaks to the hair. Can be applied over Hair White to give silver highlights. 1 fl. oz. **No. 119S** (also 4.5 fl. oz.)

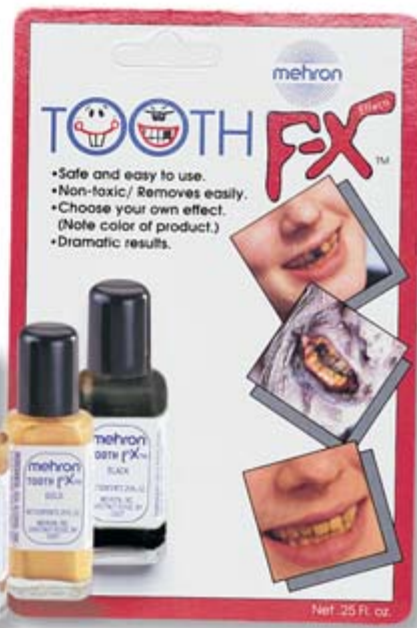


*Specialty Powders*

An ultrafine loose powder to use as cosmetic dirt or ash. Texas Dirt (**P**), Trail Dust (**D**), Charred Ash (**A**) or Natural Bronze (not shown) (**B**). 1 oz. (28 gm.) **No. 105-1** • 4 oz. (112 gm.) **No. 105**

*Tooth Fix™*

Safe, non-toxic paint-on tooth color. Black (**B**), White (**W**), Nicotine/Decay (**N**) and Gold (**G**). .25 fl. oz. (7 ml.) **No. TFX**



# Face Painting for Everyday of the Year



## Party Palette™

Our most popular face paint, **Fantasy F/X™**, in a convenient artist palette of five versatile colors. Safe, non-toxic formula is as easy to apply as 1-2-3 and washes off with soap and water. **Party Palette™** adds excitement to any celebration (and makes a fantastic birthday present!). 1.25 oz. (35 gm.) **No. FFX-PP**

## Over The Rainbow™

Six brilliant, water-activated colors provide outstanding coverage for quick and easy face painting. Simply wash with soap and water to remove. 1.3 oz. (36 gm.) **No. 6WS**

## WaterWorks™

Our water soluble, color-rich formula in a convenient flip-top case. **WaterWorks™** offers the same superior coverage and easy soap-and-water removal as **Over The Rainbow™**...it's just painted on with a brush! 1.25 oz. (35 gm.) **No. WW** Carded **No. WWC**



## Child's Play



*fips*

Use **Over The Rainbow™** crayons to outline designs or to trace a stencil, then fill in with contrasting color.

*Step by Step*  
 Easy instructions included in every package!

*Tri-Color Palette*  
 ...Easy as 1-2-3

Our superb quality cream makeup provides complete, long-lasting coverage when set with **Colorset Powder™**. Each palette includes a vivid character photograph and detailed easy-to-follow application instructions guaranteeing stunning results.

.75 oz. (21 gm.) No. 403C



Clown (C)



Cat/Animal (T)



Skeleton (S)



Vampire (V)



Ghoul/Witch (G)



Monster (FR)



Bruised (B)



Werewolf (W)



Pirate (P)



Camouflage (CA)



True Colors (USA)

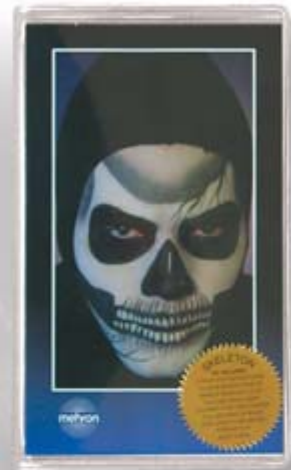
# Character Kits

## Convenient, All-in-one packages

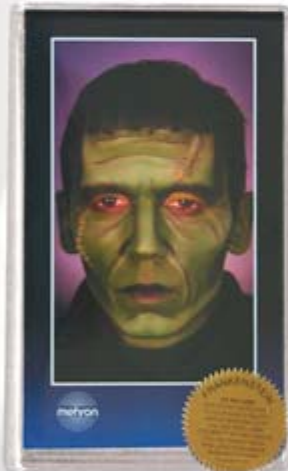
Each **Character Kit** includes makeup, applicators, accessories, clean up material and step-by-step instructions for simple, fun character makeup effects. Contents vary per character.



Bald Cap Kit (KMP-BC)



Skeleton (KMP-S)



Frankenstein (KMP-FR)



Clown (KMP-C)



Vampire (KMP-V)



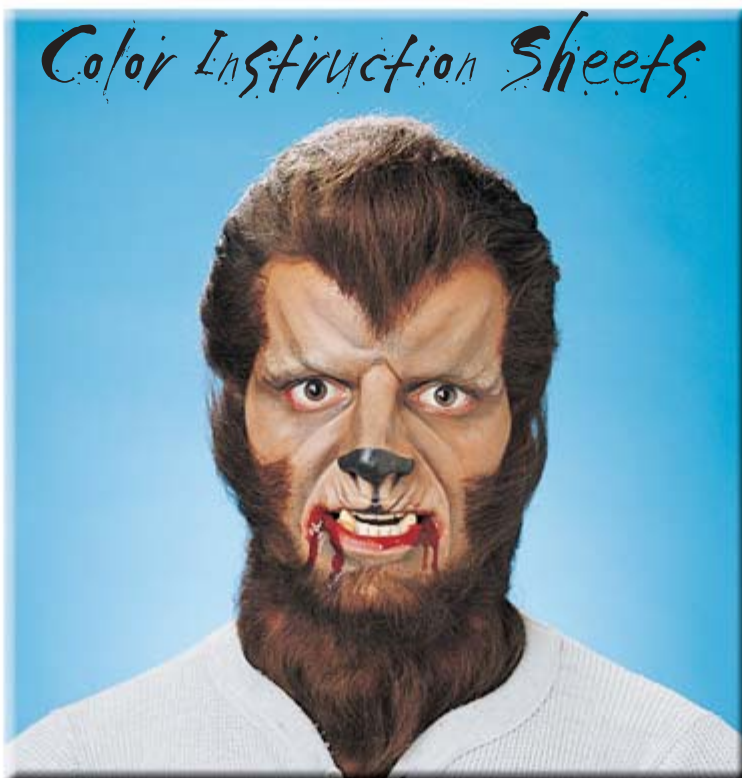
Cat/Animal (KMP-T)



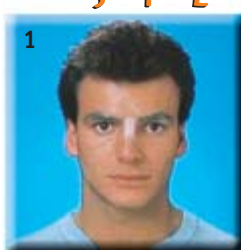
Dancer's Makeup Kit (KMP-DNC)



Witch (KMP-W)



## S T E P B Y S T E P



*Mehron makes it easy!!!*

Detailed instructions, photos and a list of all necessary products make these Color Instruction Sheets invaluable tools in creating your dream characters! **No. CIS**

Special thanks to:  
 Alan E. Ostrander (Characters courtesy of Terror on Church Street, Orlando, Fl.), Gene Flaherty for advice and for team guy on page 4,  
 and Joe Rossi for characters on pages 3, 7, 9 (alien) and 13