

eXperiences



COMPENDIUM 2013-2014

PLEASE DO NOT REMOVE
FROM THIS PROPERTY



eXperiences

Experiences Compendium...

Inside the Experiences Compendium you will find a convenient compilation of businesses and the services they offer that will assist in ensuring your stay is filled with a range of impressive experiences. This region, stretching from Busselton to Augusta and beyond has a wealth of natural beauty for everyone to enjoy and you will discover a pictorial of some of these landscapes within the Experiences Compendium.

Take the time to fill your days with special experiences that will create lasting memories of this stunning holiday destination... happy holidays!



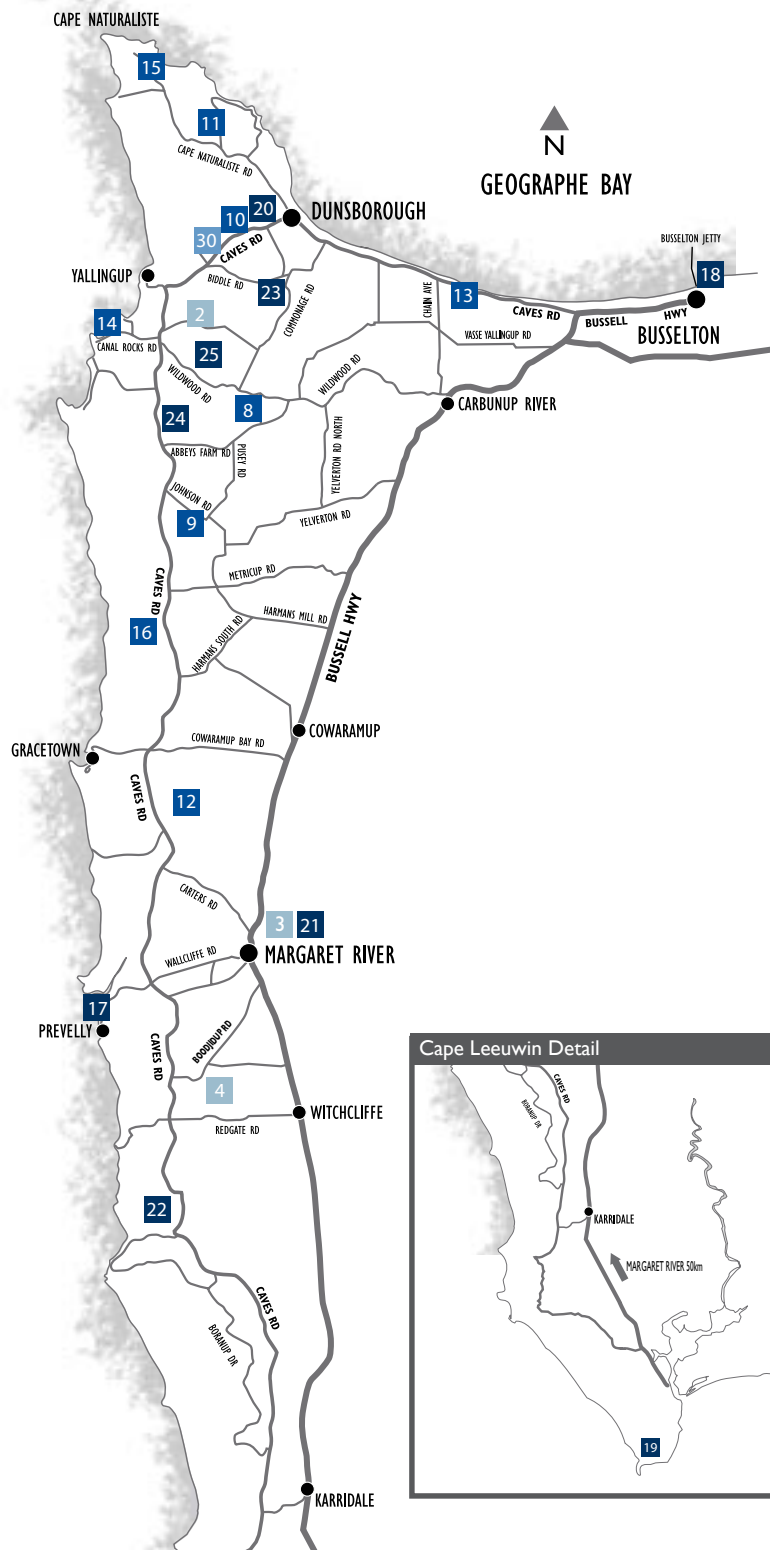
To ensure the next people staying in this wonderful accommodation are able to utilize the Experiences Compendium please treat it with care and do NOT remove it from the property. Thank you!

Contents...

- LOCATION MAPS
- ARTISANS
- FOOD TO GO
- BREWERIES, WINERIES & RESTAURANTS
- ATTRACTIONS & TOURS
- BUILDING & DESIGN
- LIFESTYLE & SHOPPING



eXperiences



Dunsborough Town Centre



Enterprise Park (LIA)

ARTISANS

- 1 Christian Fletcher
- 2 Gunyulgup Galleries
- 3 Jahroc Galleries
- 4 Payet Gallery

FOOD TO GO

- 5 Peko Peko
- 6 Squidlips
- 7 Tas's Bakery

BREWERIES, WINERIES & RESTAURANTS

- 8 Aravina Estate
- 9 Bootleg Brewery
- 10 Clancy's Fish Pub
- 11 Eagle Bay Brewing Co
- 12 Edwards Wines
- 13 Flametree Wines
- 14 Lamonts Smiths Beach
- 15 Other Side of the Moon
- 16 Woodlands Winery

ACTIVITIES & TOURS

- 17 Bushtucker Tours
- 18 Busseton Jetty
- 19 Cape Leeuwin Lighthouse
- 20 Country Life Farm
- 21 Harvest Tours
- 22 Margaret River Caves
- 23 Simmo's
- 24 Yallingup Maze
- 25 Yallingup Shearing Shed

BUILDING & DESIGN

- 26 Jarrod Holst Building & Design
- 27 Tallwood Construction and Dane Design Australia

LIFESTYLE & SHOPPING

- 28 Boutique Eco
- 29 Ella Baché
- 30 EMPIRE Spa
- 31 Evolution Surf
- 32 Nina's Jewellery

Note: All maps shown are for illustration purposes only



eXperiences

ARTISANS



EAGLE BAY



eXperiences

Fine Art Photography by Christian Fletcher

Christian's photography connects with the form, colour and light of Australia's extreme landscapes and has become centrepieces in homes across the world. Yet there's a tireless pursuit of perfection that keeps him testing new territory and embracing the boundless limits of technology.

"Photography is all about capturing an image. The art comes when that image has the power to move someone."

Christian's three showcase galleries in Dunsborough, Margaret River and Mandurah are a visual experience not to be missed. Whether you take a photograph home or just marvel at our beautiful country captured at its best, it will be one of the highlights of your stay.

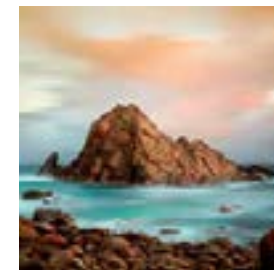
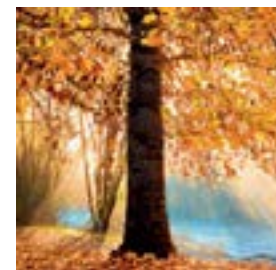
2011 AIPP Australian Landscape Photographer of the Year

**Open: 7 days 9am - 5pm Monday to Saturday
10am - 4pm Sundays**
(Closed Christmas Day, Boxing Day and Good Friday).



Shop 4/27 Dunn Bay Road
Dunsborough

P 9759 1555
E gallery@christianfletcher.com.au
W www.christianfletcher.com.au





eXperiences

Gunyulgup Galleries

Gunyulgup Galleries, off Caves Road just south of Yallingup offers the opportunity for local, interstate and overseas visitors to view a diverse range of Western Australian art and design. Over 80 artists and craft persons are represented at any one time and displays of paintings, glass, sculpture, ceramics, jewellery and textiles are changing constantly. The gallery presents five to six solo exhibitions a year.

Gunyulgup is an Aboriginal word meaning 'resting place near water'.

Since its inception in 1987 the gallery has won international recognition for presentation, quality and service.

Open: 7 days 10am - 5pm

Closed Wed & Thurs for May, June, August & September

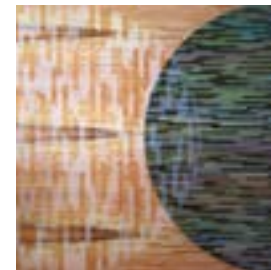


Gunyulgup Valley Drive
Yallingup

P 9755 2177

E enquiries@gunyulgupgalleries.com.au

W www.gunyulgupgalleries.com.au





eXperiences

Jahroc Galleries

The largest contemporary gallery in the South West.

Jahroc Galleries is located in the main street of Margaret River down near the River with a beautiful Karri Forest as a backdrop. The gallery is home to Jahroc Furniture and also exhibits Fine Art, Glass, Sculpture, Ceramic, and fine wood.

Jahroc Furniture have forged a reputation as Western Australia's leading furniture designer/makers with Gary Bennett and David Paris spending the last 25 years working together producing pieces that have been acquired by collectors around the globe. With over 50 industry awards the Jahroc design team are by far the most highly awarded furniture makers in Australia.

Jahroc Galleries boast an enviable stable of fine Australian artists such as Larry Mitchell, Shaun Atkinson, David Bromley, Jos Myers, Janine Daddo, Judy Prosser, Di Taylor, Kyle Hughes-Odgers and Astrid Dahl plus a stable of over 60 other established and emerging West Australian artists. Jahroc Galleries simply must be seen when visiting the Margaret River region.

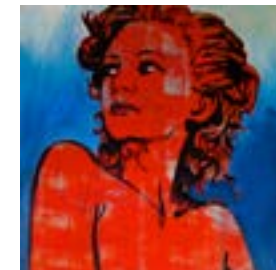
Visit Jahroc Galleries in Margaret River today and find why all that do leave inspired.

Open 7 days 10am - 5pm



83 Bussell Highway
Margaret River

P 9758 7200
E info@jahroc.com.au
W www.jahroc.com.au





eXperiences

Payet Gallery

Located five minutes from the Margaret River town, Payet Gallery is a purpose built working studio & gallery, showcasing the remarkable hand crafted designs of the Payet brothers.

Exquisitely crafted, sophisticated designs accentuate the use of stunning gemstones such as peridot, tourmalines, garnets & diamonds and a luscious variety of pearls including Broome, Abrolhos Island and Tahitian pearls.

Their latest collection “La Digue” takes inspiration from the birthplace of the Payets; the tropical island paradise of the Seychelles. The designs incorporate the organic shapes of pearls & stones, enhanced by using both textured & polished metals.

The Payets are happy to assist with requests for your special events including weddings and anniversaries.

We look forward to welcoming you.

Open daily 10am - 4pm.



611 Boodjidup Road
Margaret River

P 9757 6885
E info@payetgallery.com.au
W www.payetgallery.com.au





eXperiences

FOOD TO GO



INJIDUP BEACH



eXperiences

Peko Peko Sushi & Noodles

Peko Peko is not just a sushi joint, it has been designed to have healthy taste options for every food craving....

The unique foods available include fresh rice paper rolls with delicious dipping sauces, healthy, full flavoured soups, yummy salads with a choice of five dressings, fresh sashimi packs and ultra fresh sushi with sublime flavours that are addictive from the first bite.

After 5pm the wok tossed noodles start, with a super quick, easy menu and featuring homemade sauces and generous serves of meats and vegetables.

You can also BYO and casually dine in for the same prices as the takeaway meals.....all day.

**Open: 7 days 8.30am – 8.30pm in summer
8.30am – 7.30pm in winter**



59 Dunn Bay Road
Dunsborough

P 9759 1145
W www.pekopeko.com.au





eXperiences

Squidlips

New Squidlips Margaret River - NOW OPEN

Squidlips have taken Fish 'n Chips to the next level, not only do we make the best fish'n'chips in the South West, but we have created a delicious Gourmet Twist menu for the more sophisticated palate. Try our marinated prawn & scallop skewers, home-made Thai fishcakes, tempura prawns or speciality Squid!

As our name suggests Squidlips specializes in squid; try yours lightly dusted in salt & pepper, lemon pepper, cajon spice or chilli seasoning! **DELICIOUS!!**

Local fish including: pink snapper, yellow fin whiting and gummy shark can be dusted in your favourite seasoning and grilled, or you may choose to have yours fried in our famous beer batter.

We use 100% RICE BRAN OIL which contains NO CHOLESTEROL and is filtered daily to ensure a healthier choice.

**Open: Summer and school holidays 7 days
Lunch 12 - 2.30pm and Dinner from 5pm Daily
(hours may vary in off peak periods)**

Squidlips Dunsborough
in the Coles complex
27a Dunn Bay Road
Dunsborough

P 9759 1799

Squidlips Margaret River
in the Target Arcade
118-121 Bussell Hwy
Margaret River

P 9757 9960



E squid.lips@yahoo.com.au
W www.squidlips.com.au

WA's TOP 5 FISH & CHIPS

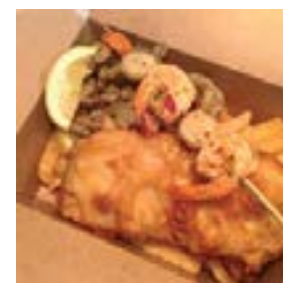
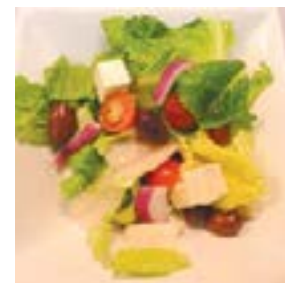
Rated in the Top 5 Fish & Chips in WA by The Western Australian
(Source: West Weekend Magazine 01-11-2008)

High five Fish and chips
Who said the British do the best fish and chips? Not us. Here are five of WA's best.

Mountadam magic
The results of a makeover at Mountadam in South Australia's Eden Valley are evident in its new releases

Squid Lips Dunsborough
Famous for its addictive chilli squid and salt and pepper squid, they also excel at sushi, tempura prawns, scallop skewers and gourmet salads. They offer a variety of fish from snapper to barramundi. Squid Lips is a great choice if you feel guilty about over-indulging but still want to watch the sunset over the ocean while feasting on seafood.

Kiwi Sangria





eXperiences

Tas's Bakery

For the finest quality foods!

- Award winning Pies • Pasties & Sausage rolls
- Family Pies • Quiches
- Salad & Gourmet Rolls • Croissants
- Hot Chips • Vegetarian options
- All pastries available cold to take home
- A wide range of Cakes with Fresh Cream
- Birthday Cakes made to order
- Slices, Donuts & Muffins
- Coffee, Tea & Hot Chocolate
- Cold drinks

Some of our current bread range includes Sour Dough, Continental, Turkish, Super Seed, Sunflower, Pumpkin & Apricot loafs, plus an assortment of rolls.

Catering for special events such as birthday parties and weddings is available.

We are located next to the Lions Park, in the centre of town.

Open: 7 days 6am - 5:30pm



Shop 18 Dunsborough Park Shopping Centre
Dunsborough

P 9756 7122
E tas@dunsborough.com





eXperiences

BREWERIES, WINERIES & RESTAURANTS



CAPE NATURALISTE



eXperiences

Aravina Estate...

Our spectacular estate is set amongst acres of grapevines and is surrounded by landscaped gardens and pristine forest, making it one of the most breathtaking venues Margaret River has to offer.

Our exquisite restaurant is led by a team of world-class chefs, who are committed to using the freshest seasonal and organic produce possible to evolve with the changing seasons. This wonderful setting is complemented by a wide range of superbly crafted wines that are truly expressive of the Margaret River wine region.

While you are enjoying a leisurely lunch, your children will be happily entertained in our state-of-the-art playground. After lunch, stroll through our gallery which is overflowing with an eclectic collection of homewares, accessories and gifts.

Whether it is lunch for two, an intimate gathering for 20, or a formal function for 120 guests, our impeccable service, innovative cuisine and elegant wines make Aravina Estate the ultimate venue for your next lunch, wedding or corporate function.

Open daily from 10am to 5pm

Closed: Christmas Day, Boxing Day and Good Friday



61 Thornton Road
(Cnr of Thornton & Wildwood Rd)
Yallingup

P 9750 1111
E info@aravinaestate.com
W www.aravinaestate.com





eXperiences

Bootleg Brewery

An Oasis of Beer in a desert of wine.

Open since 1994, Bootleg Brewery, situated in the heart of the Margaret River wine region, is a favourite to both visitors and locals alike. Set against a backdrop of pine trees and on the edge of a picturesque lake, Bootleg Brewery is a casual but yet scenic location to enjoy.

Our beers speak for themselves, having created a range of award-winning boutique beers to suit every palate. Bootleg Brewery also has a terrific reputation for creating some of the most distinctive seasonal beers. All our regular beers are bottled for purchase to take home.

Our restaurant is also well known for serving moderately-priced meals in a casual atmosphere, using only fresh locally grown produce. To enhance the vibe, we have live bands perform most weekends and a great playground for the kids to explore. With viewing windows into the brewery and brewing museum, Bootleg Brewery truly is an oasis of beer in a desert of wine.

Open: 7 days 11am to 6pm
Lunch from 12pm



Puzey Road, Cnr of Johnson Rd
Wilyabrup

P 9755 6300
E brewery@bootlegbrewery.com.au
W www.bootlegbrewery.com.au





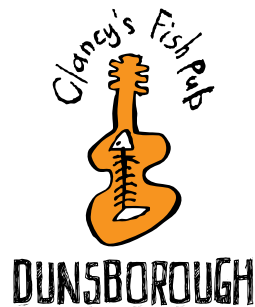
eXperiences

Clancy's Fish Pub, Dunsborough

Clancy's Fish Pub, on Caves Road just two minutes' drive from town, is perched on a hill, overlooking a tranquil lake and soaring gum trees. The pub, a simple design which allows it to take full advantage of the idyllic surrounds, has rapidly become a favourite of locals and tourists alike.

We are offering all the usual Clancy's fare including great hand crafted beer, superb fish and chips, regional wines, great entertainment, and of course the casual family atmosphere and friendly personal service that you find in all the Clancy's Fish Pubs. Beautiful in summer, blazing fires in winter, we are open all day from 12 noon.

Come check out our latest addition - the Red Room. A perfect setting for your next function.



1710 Caves Road
Dunsborough

P 9750 5035
E dunsborough@clancysfishpub.com.au
W www.clancysfishpub.com.au





eXperiences

Eagle Bay Brewing Co. 100% handcrafted beer, no shortcuts!

Eagle Bay Brewing Co. is a family owned and operated restaurant located on a rural property overlooking Eagle Bay, only 5 minutes from Dunsborough.

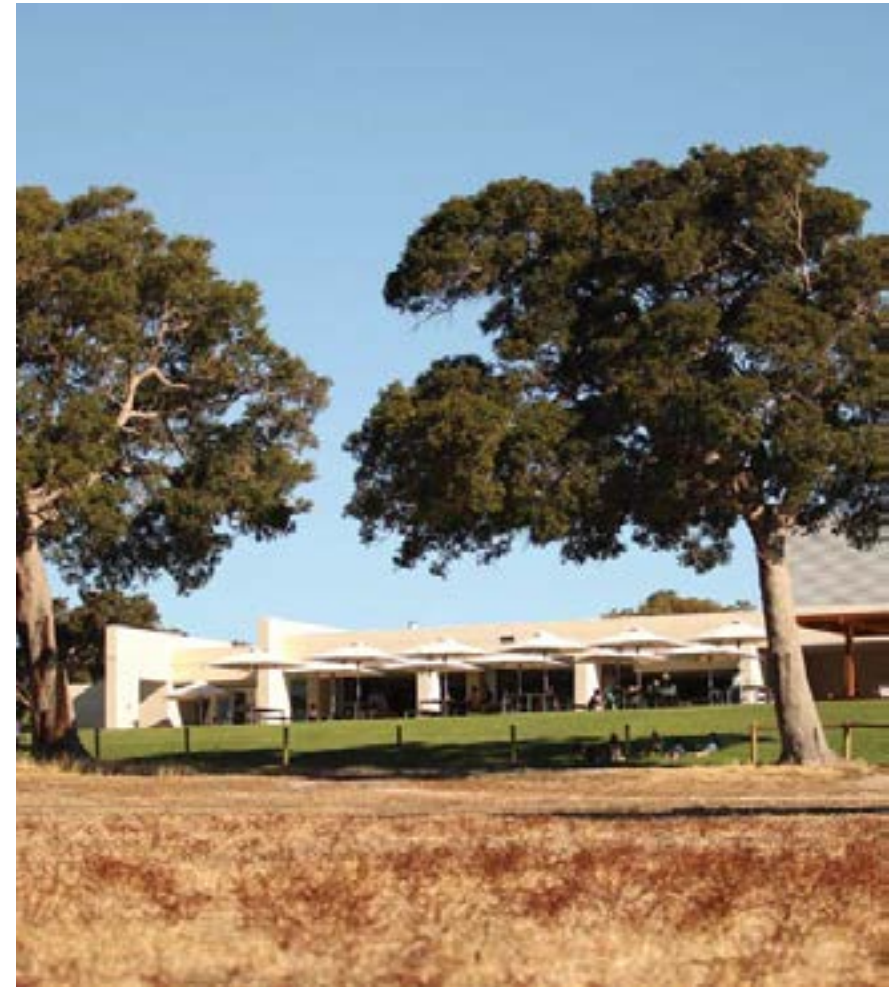
Eagle Bay Brewing Co. offers a relaxed family-friendly environment for lunch, late lunch and all day grazing. Our range of handcrafted beer is made with rainwater, malted barley, hops and yeast (only).

Our Estate wines are made from the vineyards on the property. Restaurant fare includes wood fired pizzas, taste plates, fish and chips, gourmet burgers, salads and much more.

We offer a kids menu and we have a playground.

Open: 7 days for lunch / late lunch / all day grazing from 11am.

Bookings recommended!



252 Eagle Bay Road
Eagle Bay

P 9755 3554
E enquiries@eaglebaybrewing.com.au
W www.eaglebaybrewing.com.au





eXperiences

Edwards Wines Two Brothers – One Passion

In 1990 Mike & Christo's father Brian, set out on an epic adventure in a tiny Tiger Moth named Matilda, flying solo from England to Australia and lived his dream.

Brian swayed by his passion for Shiraz and the potential he saw in the Margaret River region, then began to follow another dream. Discovering a property where he could firstly land Matilda and secondly plant grapes was a turning point for the whole family. What started as a simple 'tree change' has grown into a thriving family business.

Mike creates the wines while Christo tends the vines; that is when they're not tearing up the surf during regular 'board meetings'. This synergy between viticulture and winemaking is strengthened by the brother's close relationship, their love for the region and what they do. Their picturesque 25 hectare vineyard is now home to some of the region's most elegant and vibrant award winning wines.

Edwards is located five minutes drive NW of Margaret River, where Matilda sits proudly near Cellar Door as a gentle reminder to pursue your passions.

Open: 7 days 10.30am - 5pm.

EDWARDS
MARGARET RIVER

687 Ellen Brook Road
Cowaramup

P 9755 5999
E info@edwardswines.com.au
W www.edwardswines.com.au





eXperiences

Flametree Wines

By winning Australia's most well-known and respected wine accolade, the Jimmy Watson Memorial Trophy, with their first ever red wine, Flametree has firmly planted themselves in the upper echelon of Margaret River wine producers.

The stunning Hampton style Cellar Door building is a must see when visiting the region. With an open fire place, inviting deck and beautiful gardens the Flametree Cellar Door is a must visit at any time of the year.

We offer a relaxed wine experience and welcome visitors for tastings seven days a week. Taste our award winning wines, browse the art exhibition and relax with a glass of wine and cheese platter. Our gourmet selection of cheese, olives, dukkah, olive oil and much more will leave you wanting to try them all.

Open daily 10am - 5pm. Closed Christmas Day, Boxing Day, Good Friday & Anzac morning.



7 Chain Avenue, Cnr Caves Rd
Dunsborough

P 9756 8577
E info@flametreewines.com
W www.flametreewines.com.au





eXperiences

Lamont's Smiths Beach

Lamont's Smiths Beach incorporates a fabulous Deli, Restaurant and Bar. The Deli trades 7 days - 7am to 7pm serving espresso coffee, casual breakfasts, a terrific range of premium wines at competitive bottle shop prices and a great range of "food to go".

The Restaurant and Bar opens 7 days from noon and serves right through till late; dine on a quick bite of tapas or feast on our seasonal a la carte menu and wine list with iconic Margaret River, Australian and International wines or visit the Lamont's Cellar Door tasting area operating 7 days a week from 11am till 5pm.



Smiths Beach Road
Yallingup

P 9750 1299
E smithsbeach@lamonts.com.au
W www.lamonts.com.au





eXperiences

Other Side of the Moon Restaurant

Located at 5-star, beachfront Pullman Resort Bunker Bay, picturesque Other Side of the Moon Restaurant offers truly indulgent dining experiences and magnificent ocean views.

Open 7 days for breakfast, lunch and dinner, the restaurant features a distinctly “Modern Australian” menu utilising fresh local South-West produce and a wine list that embraces the region’s outstanding local vintages.

Sample Menu

ENTREE

Twice-baked Cambray sheep cheese soufflé with an autumn herb salad
Margaret River venison with a pepper crust, pickled beetroot and horseradish

MAINS

Seafood stew with today’s best local catch, autumn root vegetables and saffron-garlic bread
Dorper lamb shank marinated for 24-hours in Middle Eastern spices, then slow cooked and served with lentils and chickpeas
Cape Naturaliste beef filet 180g served with carrot puree, salt-baked shallots, eggplant croquette and beetroot glaze

DESSERT

Dark Side of the Moon (serves two)
Chocolate fondue with pastry condiments and pistachio and strawberry ice-cream sandwiches
Walnut-caramel tart, orange bavaoise with hippocras pear
Sweet potato brownie with honey, buttered apple vanilla scented milk foam



Bunker Bay Rd (off Cape Naturaliste Rd)
Naturaliste

P 9756 9100
W www.pullmanresortbunkerbay.com.au





eXperiences

Woodlands Winery

Woodlands vineyard was established in 1973 by David & Heather Watson on Caves Road in Wilyabrup, and was one of the first five vineyards to be planted in the Margaret River Wine Region. Woodlands remains owned and operated by the Watson family.

Woodlands vineyard is dry grown and maintained by hand using organic and traditional methods. Wines produced include Cabernet Sauvignon, Cabernet Merlot blends, and Chardonnay.

Woodlands Cabernet Sauvignon continues to garner awards and critical acclaim, including being listed in the Langtons Classification of Fine Wines.

The Woodlands Cellar Door places you in the heart of the winery- with sweeping views of the vineyard to the south, the winery to the west, and barrel hall to the north.

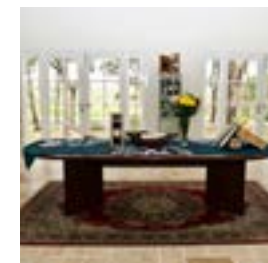
Located on the corner of Caves Road and Metricup Road, the Cellar Door is open daily. Gourmet Traveller Wine Magazine has named Woodlands as the best small Cellar Door sales experience in Margaret River.

Open: 7 Days 10am to 5pm



3948 Caves Road
Wilyabrup

P 9755 6226
E mail@woodlandswines.com
W www.woodlandswines.com





eXperiences

ACTIVITIES & TOURS



BORANUP BEACH



eXperiences

Margaret River Winery and Brewery Tours

Gourmet lunch and 7 attractions - 10am to 5pm daily!

- Pick up from all accommodation in Busselton, Dunsborough and Margaret River • 40 wines, breweries, choc & cheese factories
- Ports-liquors • Gourmet winery lunch • Great music, wild foods, fun guides • Daily pick up all areas, 10am to 5pm • \$90 Adults, \$40 children, Includes gourmet lunch at a winery.

Margaret River Cave, Canoe Tours

Adventure on scenic Margaret River!

- Wild foods, wilderness, wildlife, cliffs, caves • 4 hour fun, eco-canoe tour, on river to 5 heritage sites, with State awarded guides • Wild food lunch, medicinal plants, good value • Try the emu, roo & Witjuti Grubs
- Swim in clear fresh water • 10am to 2pm • Meet daily 9.45am at Margaret River mouth, Prevelly Beach • \$90 Adults, \$40 children.

We guarantee brilliant fun memories!

Book 8am - 8pm 7 days.



Do both tours in a week and receive \$40 off per couple.

Maxi deal Monday - book either tour on Monday and receive \$20 off per couple.



Busselton, Dunsborough & Margaret River

P 9757 9084

M 0419 911 971

E info@bushtuckertours.com

W www.bushtuckertours.com





eXperiences

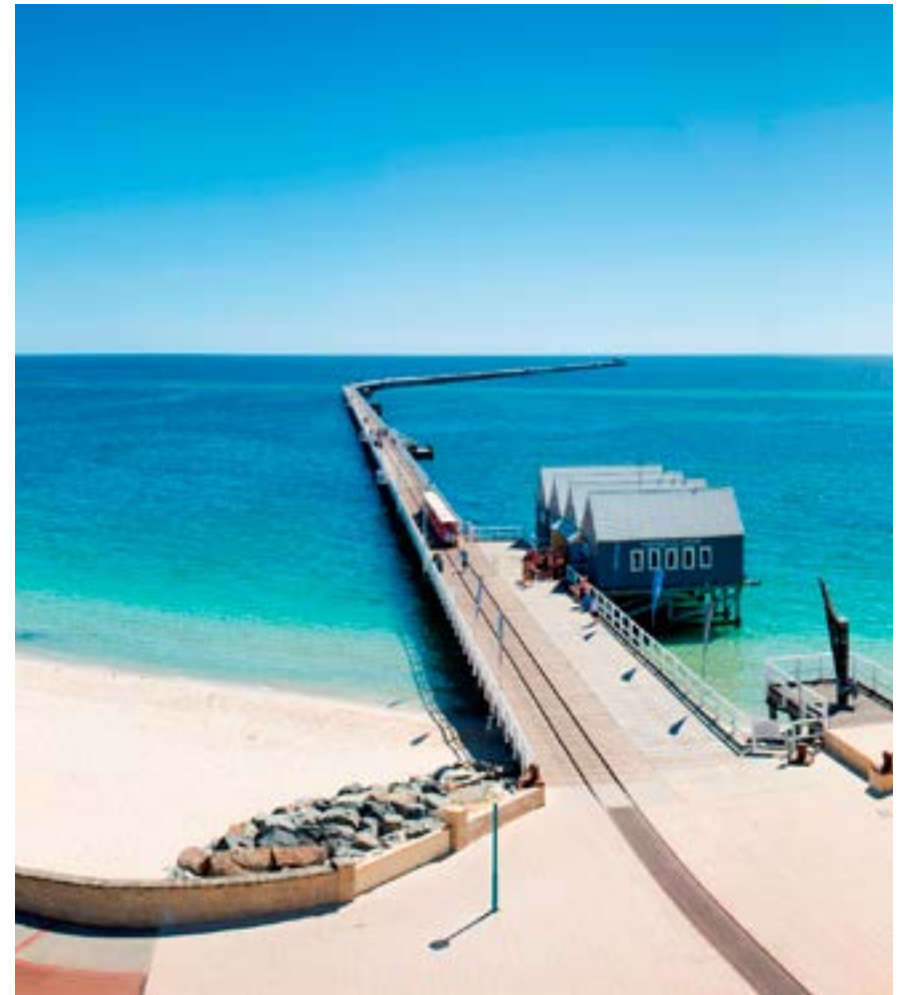
Busselton Jetty

Extending 1.8 kilometres over the protected waters of Geographe Bay, the heritage listed Busselton Jetty is the longest timber-piled jetty in the Southern Hemisphere.

Children young and old enjoy the Jetty Train experience. From glimpses of dolphins frolicking to spotting local fishermen snaring their catch of the day, the Jetty Train trip promises to deliver something for everyone.

Located 1.7 kilometres from shore at the end of the Jetty, the Underwater Observatory can accommodate up to 40 people at one time. Descending 8 metres beneath the waters' surface, visitors can view the amazing corals and fish life through eleven viewing windows. The Busselton Jetty, with more than 300 individual marine species, is host to an awe inspiring "forest" of vividly-coloured tropical and sub-tropical corals, sponges, fish and invertebrates.

Open 7 days. Closed Christmas Day



Busselton Beachfront

P 9754 0900

E bookings@busseltonjetty.com.au

W www.busseltonjetty.com.au



eXperiences

Cape Leeuwin Lighthouse and Margaret River Caves

Explore new horizons and delve a little deeper in the southern reaches of the Margaret River region with a visit to Cape Leeuwin Lighthouse and the Caves.

Cape Leeuwin is the most south western point of the Australian continent and also boasts the mainland's tallest lighthouse. Climbing to the top on a guided tour and gazing out to where the Indian and Southern Oceans meet is an absolute must!

Once you tick Cape Leeuwin off the bucket list head underground to experience Jewel, Lake, Mammoth and Moondyne Caves on a range of guided and self-guided tours. Please visit www.margaretriver.com for more information, daily operating hours and ticket prices.



Margaret River Visitor Centre
100 Bussell Highway
Margaret River

P 9757 7411
E welcome@margaretriver.com
W www.margaretriver.com



eXperiences

Country Life Farm

A fun day out for all ages!

Pay one entry fee and enjoy all the fun we have on offer.

NEW Indoor Play centre

• 0-18 months • 18 months – 4 years • 5 – 12 years

Country Life Farm

- Hand feed our friendly animals anytime of day
- Rabbits & guinea pigs, goats, sheep, llamas, alpacas
- Kangaroos, cows, ponies, donkeys and more...

Fun for everyone

- Giant Bouncy Castle
- Huge Inflatable slide
- Boat rides
- Merry go round
- Toddlers play area
- BBQ Facilities and shady picnic areas
- Free Tea & Coffee

We also have the NEW shoot & spin dodgem cars (additional cost).

Party bookings welcome!

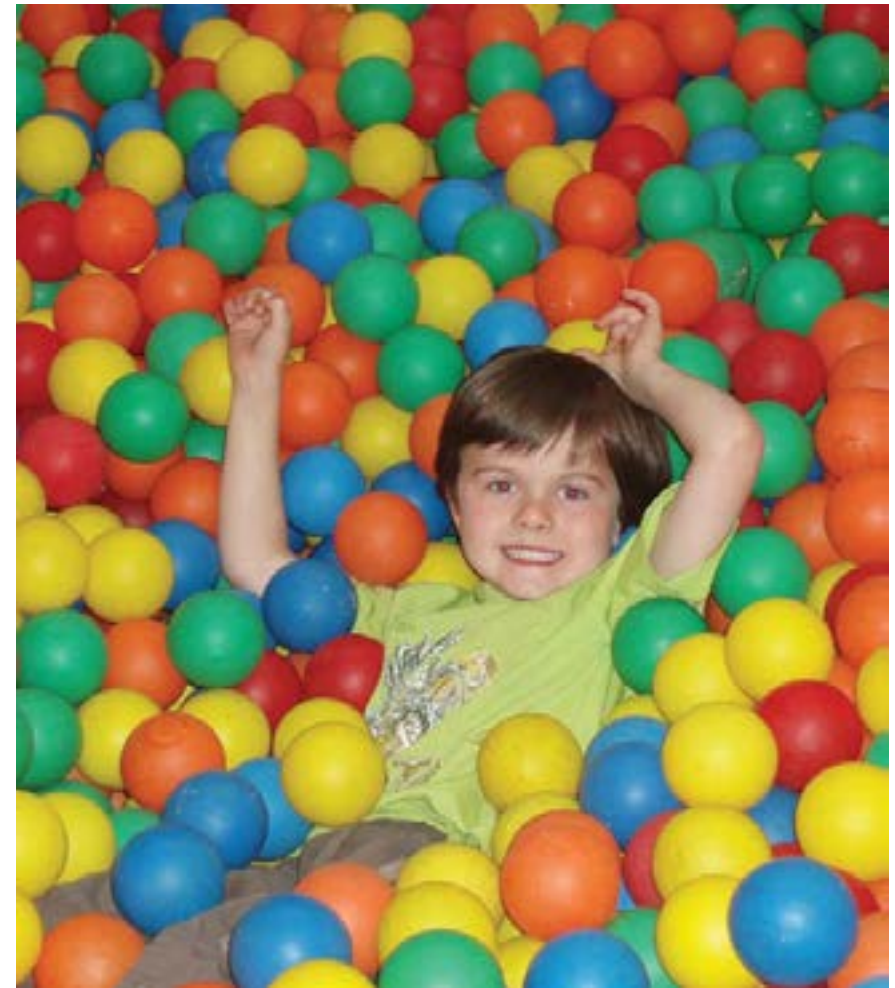
Drinks and icecreams are available.

Open: 7 days 9:30am - 5pm.



1964 Caves Road
Dunsborough

P 9755 3707
E farmerjohnno@msn.com
W www.countrylifefarm.com.au





eXperiences

Harvest Tours...Margaret River's Wine Tour for Food Lovers

On our award winning, premium Full Day tour you will:

- Enjoy a stunning a-la-carte lunch at Cullen Wines with a glass of biodynamic wine
- Taste beautiful wines at boutique and five star Cellar Doors
- Sample dozens of delicious local foods at the region's top foodie destinations
- Indulge in an exclusive wine and cheese pairing
- Tour a working vineyard/winery
- Savour the region's finest chocolate and coffee
- Travel in luxury aboard our Mercedes bus
- Pick up and drop off from Busselton, Yallingup, Dunsborough, Bunker Bay and Margaret River to your door

All this for only \$125pp.

We also run private charters and can help you plan your perfect itinerary. Utilise our Mercedes Sprinter, local driver/guide, as well as our expert local knowledge. Our Harvest Wine and Cheese Matching Experience is included free of charge.

A full day touring is \$600, for up to 11 people.



PO Box 100
Cowaramup WA 6284

P 0429 728 687
E savour@harvesttours.com.au
W www.harvesttours.com.au





eXperiences

Icecream, birthday parties, 18 hole mini golf course and much more...

Over the last 20 years, we've grown bigger, but still make our icecream in the same way we did back then. We use the same old Irish recipe, full fat milk and real cream from the local girls (cows that is), mix the ingredients the old way and source the best quality fruit possible.

Wouldn't you love to try a double dilemma of Orange Mascarpone and Burnt Caramel with Salty Caramel Swirl?

Imagine the taste sensation of a Sundae filled with Mango Macadamia, topped with Blood Orange Sorbet and then drizzled with hot chocolate sauce...

Simmo's in Dunsborough is more than an icecream shop.

- Over 60 icecream flavours
- Hot Waffles
- Great Coffee
- Birthday cakes & parties
- Take-away tubs
- Massive parkland with resident emu
- BBQ's and undercover picnic area
- 18 hole mini golf

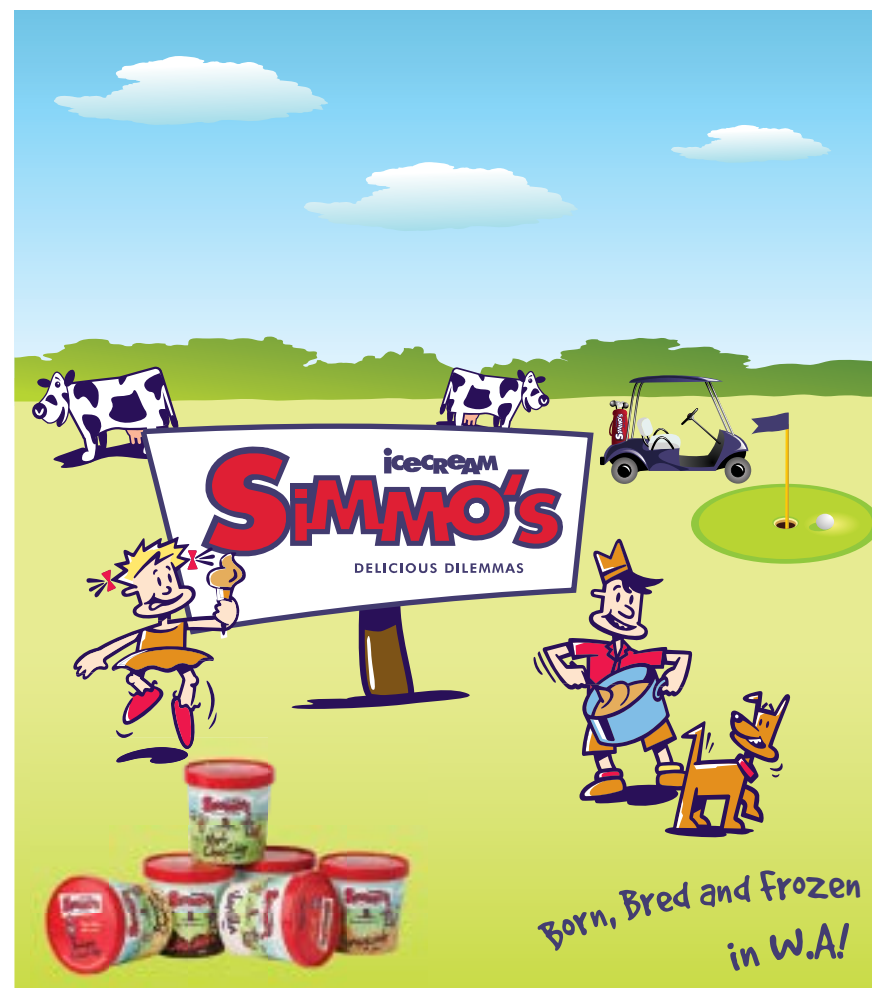
Life's too short, eat dessert first!

Open: 7 days 10.30am – 5.00 pm



161 Commonage Road
Dunsborough

P 9755 3745
E delicious@simmos.com.au
W www.simmos.com.au





eXperiences

Yallingup Maze

Challenge your mind...

Excite your senses...

Have the time of your life!

- Conquer the Ever Changing Maze
- Discover the secrets of decoding
- Play tricky indoor puzzles and games
- Venture into the natural playground under the magic forest
- Spot the "Critter Hunt" in nature's playground
- Find the secret vege garden and wriggly worm farm
- Bounce on the Jumpy Castle (weather permitting)
- Freshly ground coffee
- Delicious home-made café food
- Relax overlooking the lake vista

Open every day 9am - 5pm

Closed Christmas Eve, Christmas Day, Boxing Day



3059 Caves Road
Yallingup

P 9756 6500
E lost@yallingupmaze.com.au
W www.yallingupmaze.com.au





eXperiences

Treat yourself to the touch of Australian Merino wool ...

Boutique Eco - Open: 7 days

Boutique Eco is a gorgeous natural fibre experience. The fashion is exclusively all natural displaying bamboo, cotton, merino, cashmere, silk and other stunning textiles. Boutique Eco also has one of the largest selections of uggs in Australia with an extensive choice of styles and colours. Boutique Eco has essentials for your South West experience with beautiful scarves, sheep skins, cowskins, leather jackets and gorgeous fine leather handbags to spoil yourself.

Margaret River Concept Store:
Shop 2/101 Bussell Hwy
Margaret River

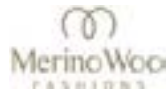
P 9758 8868
E shop@boutiqueeco.com.au
W www.boutiqueeco.com.au

Dunsborough Concept Store:
904 Commonage Road
Dunsborough

P 9759 1933
E shop@boutiqueeco.com.au
W www.boutiqueeco.com.au

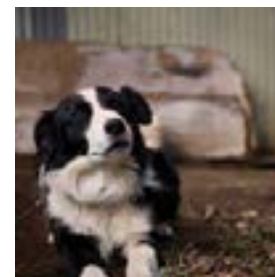
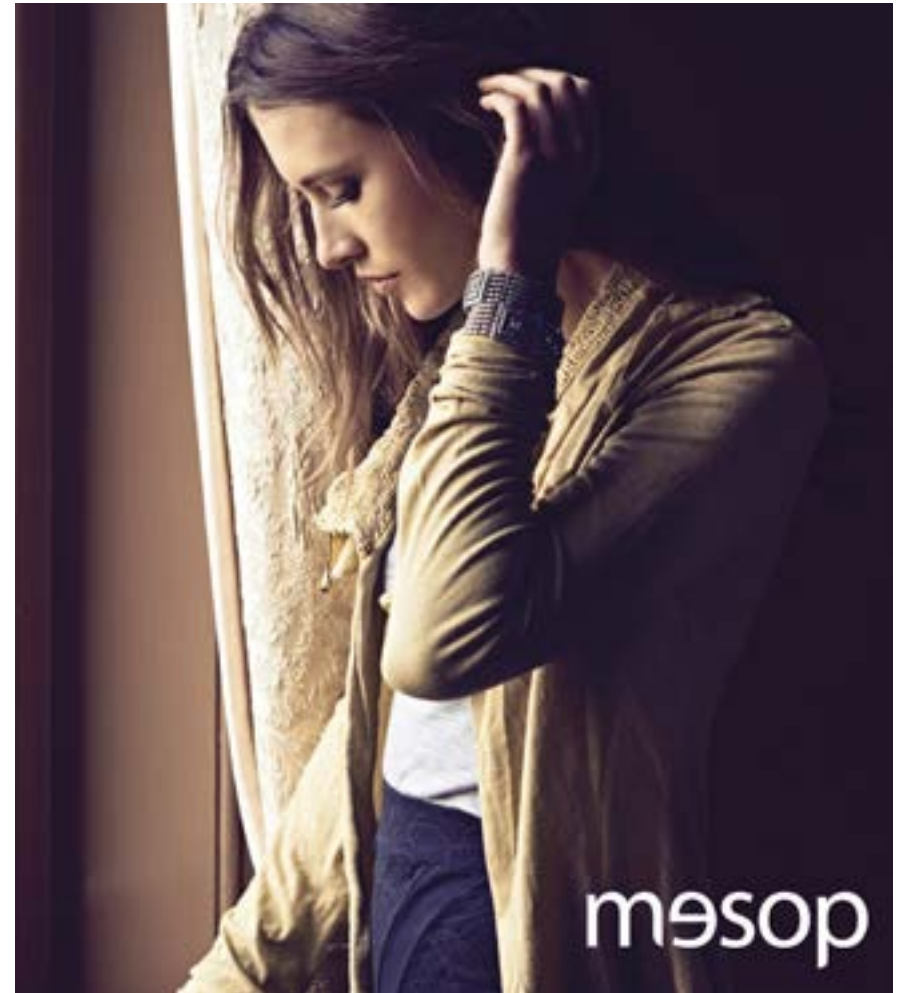
Yallingup Shearing Shed - Open: 7 days 10am - 4pm

The Yallingup Shearing Shed offers only the best Australian Merino Wool Fashions. With timeless style and beautiful quality in both men's and ladies luxurious fashion and uggs. The Yallingup Shearing Shed also offers live shearing and sheepdog shows. Bottle feeding the lambs is the highlight. Demonstrations are at 11am everyday, except Thursdays & Fridays and all of August.



1442 Wildwood Road
Yallingup

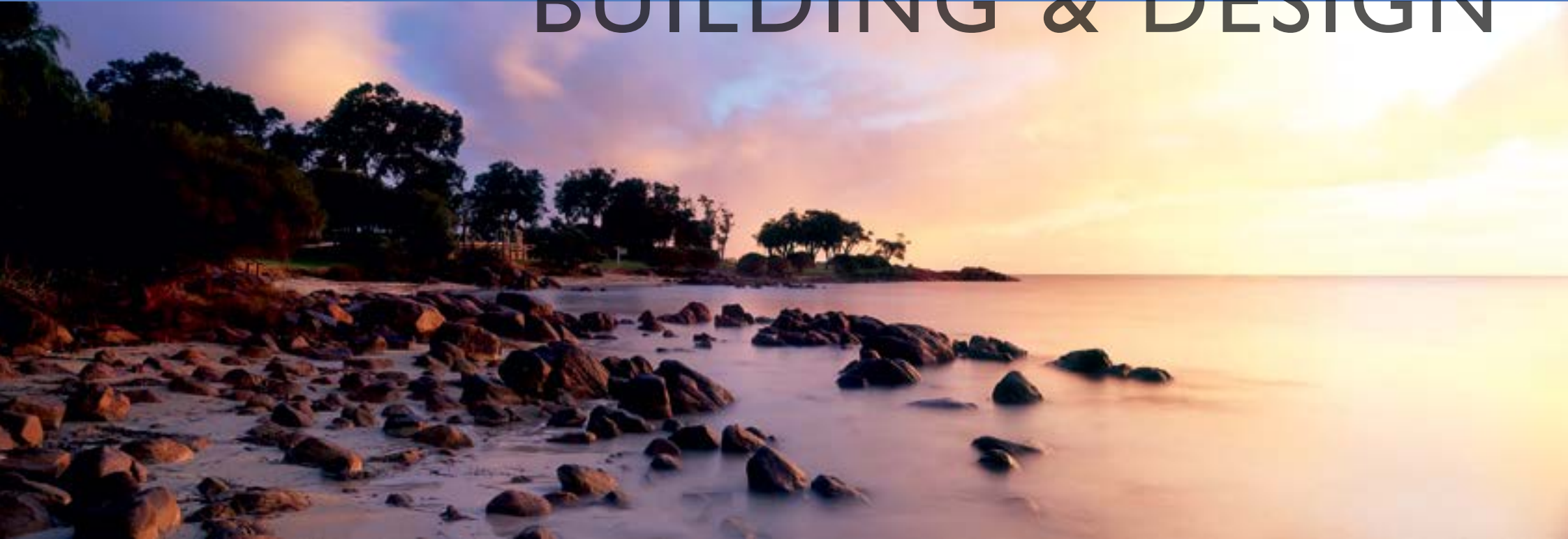
P 9755 2309
E shearingshed@westnet.com.au
W www.yallingupshearingshed.com.au





eXperiences

BUILDING & DESIGN



OLD DUNSBOROUGH



eXperiences

Jarrold Holst Building & Design

Jarrold Holst Building & Design is a specialist luxury building company offering complete design and construction services to discerning clients from Western Australia and around the world. Based in Dunsborough, in the South West corner of Western Australia, we specialise in elegant, individual homes and beautiful family retreats.

Our stunning award winning holiday houses and residences blend beautifully into the spectacular and varied landscapes of the Margaret River region, encompassing the coastal towns of Busselton, Dunsborough, Eagle Bay and Yallingup. Beautiful and innovative houses that embrace the Western Australian landscape stand as striking testimony to the successful design philosophy at Jarrold Holst Building & Design.

Clean, simple and elegant building lines dominate our exteriors, while internal living spaces are functional and practical carefully considered to enhance lifestyles and views.

With 20 years' building experience in the South West, Jarrold and his team have the expertise to construct truly remarkable homes on almost any landscape. High quality construction methods, superior products, and fastidious attention to detail at every stage of the building process are essential to ensure a superb final finish to all our homes.



2012 Western Australian Housing Awards

Winner - Regional Home of the Year

2012 HIA South West Housing Awards

Winner - South West Home of the Year

Winner - Custom Built Home of the Year

Winner - Custom Built Home \$1,500,001 & over

JH jarrold holst
building & design

PO Box 118
Yallingup WA 6282

P 9759 1422
E jarrold@jarroldholst.com.au
W www.jarroldholst.com.au





eXperiences

Tallwood Constructions

Tallwood Constructions is the name throughout the South West that is synonymous with quality. The dedicated team of professionals and craftsmen have been building homes and commercial projects of distinction for over 15 years.

Tallwood Constructions encompasses the luxury home market, unit development, commercial projects and significant renovations, each completed with the same high commitment to customer service and excellent attention to detail.

In the last four years, Tallwood Constructions have been awarded 23 State and South West housing Industry Awards. This includes South West HIA home of the year, South West HIA renovation of the year and South West HIA Outdoor Project of the year in 2011 and 2009.

Many of the award winning projects have been a collaboration between Dane Design Australia and our clients. To view the full portfolio of completed projects by Tallwood Constructions and Dane Design Australia, please visit the websites below.



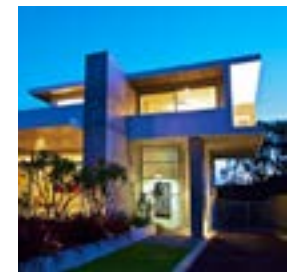
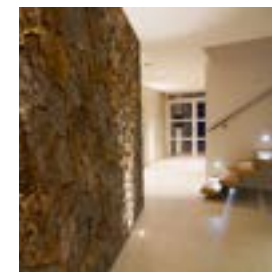
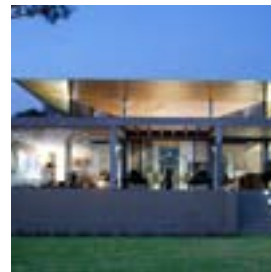
Unit 2,27 Bonnefoi Blvd
Bunbury

P 0427 568 214
E alex.c@tallwood.com.au
W www.tallwood.com.au



Unit 1/9 Griffin Drive
Dunsborough

P 9755 3861
E dane@danedesignaustralia.com.au
W www.danedesignaustralia.com.au





eXperiences

LIFESTYLE & SHOPPING



ROCKY POINT



eXperiences

Treat yourself to the touch of Australian Merino wool ...

100% BOUTIQUE
eco

Boutique Eco - Open: 7 days

Boutique Eco is a gorgeous natural fibre experience. The fashion is exclusively all natural displaying bamboo, cotton, merino, cashmere, silk and other stunning textiles. Boutique Eco also has one of the largest selections of uggsboots in Australia with an extensive choice of styles and colours. Boutique Eco has essentials for your South West experience with beautiful scarves, sheep skins, cowskins, leather jackets and gorgeous fine leather handbags to spoil yourself.

Margaret River Concept Store:
Shop 2/101 Bussell Hwy,
Margaret River

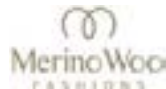
P 9758 8868
E shop@boutiqueeco.com.au
W www.boutiqueeco.com.au

Dunsborough Concept Store:
904 Commonage Road
Dunsborough

P 9759 1933
E shop@boutiqueeco.com.au
W www.boutiqueeco.com.au

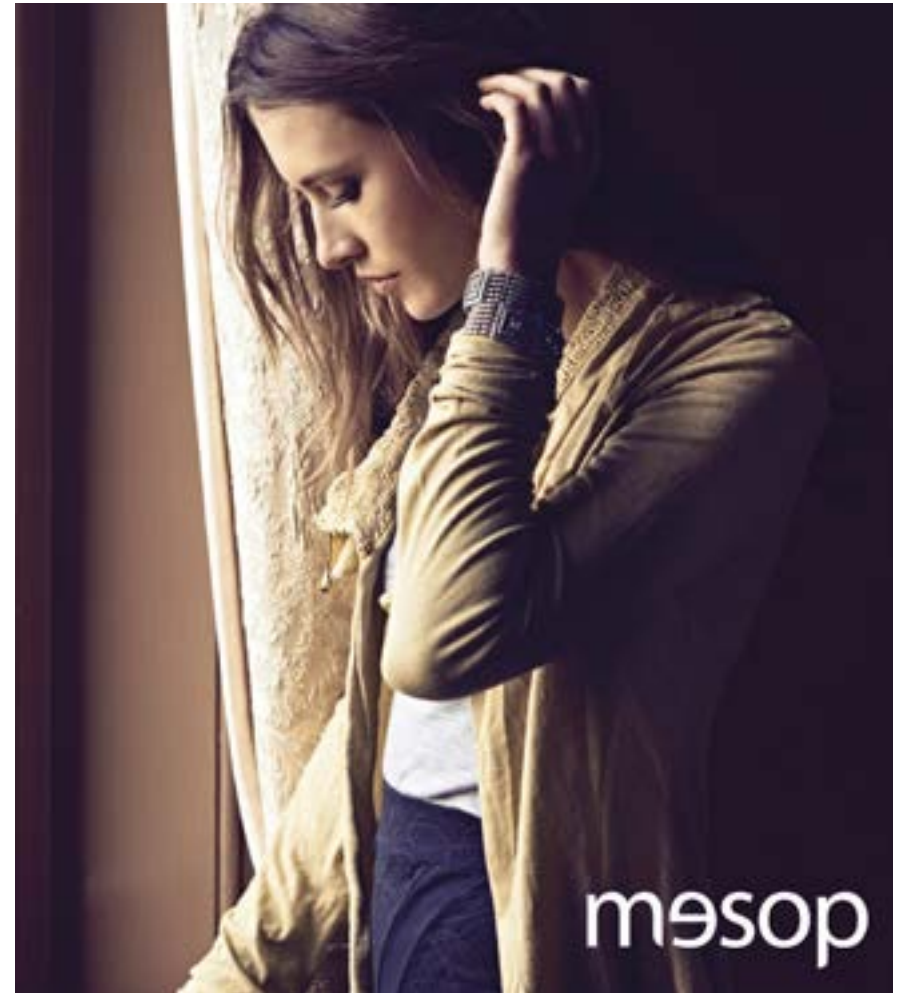
Yallingup Shearing Shed - Open: 7 days 10am - 4pm

The Yallingup Shearing Shed offers only the best Australian Merino Wool Fashions. With timeless style and beautiful quality in both men's and ladies luxurious fashion and uggs. The Yallingup Shearing Shed also offers live shearing and sheepdog shows. Bottle feeding the lambs is the highlight. Demonstrations are at 11am everyday, except Thursdays & Fridays and all of August.



1442 Wildwood Road
Yallingup

P 9755 2309
E shearingshed@westnet.com.au
W www.yallingupshearingshed.com.au





eXperiences

Ella Baché Dunsborough

Are you visiting down south for a 'well deserved' holiday? Let the experts at Ella Baché Dunsborough pamper you. Our highly skilled therapists are available for all your beauty needs.

Mention "Compendium Advertising" and receive 10% off any of the following treatments

Massages

Pamper Packages

Facials

Body Treatments

Spray Tans

Manicure • Pedicure • Shellac

Waxing • Make Up • IPL

Microdermabrasion • Oxygen Facials

Wedding Packages

5 private treatment rooms & a 4 bed Wedding Suite

Open Mon – Fri 9:00 am – 5:30pm

Saturday 9:00 am – 5:00 pm

Late appointments by arrangement

Sunday – Seasonal

Weddings at Ella Baché Dunsborough

Your wedding day is when your skin should look its absolute best. Healthy - glowing - flawless. A visit to Ella Baché Dunsborough is an experience for the entire bridal party.



Shop 2, 236 Naturaliste Tce
Dunsborough

P 9759 1662

E dunsborough@ellaexpress.com.au

W www.ellaexpress.com.au





eXperiences

Escape to a world of luxury and seclusion like no other...

Extending our philosophy of relaxation and rejuvenation, EMPIRE Spa delivers the ultimate restorative experience for our guests. Comprised of bathing suites with large stone baths, a steam room and rainforest shower suites, our purpose-built sanctuary exploits the bushland setting to its fullest. Perfect for the individual in search of quiet solitude and renewal, we also cater to couples in a room specially designed to accommodate two people.

Enjoy a range of specialised EMPIRE treatments including:

- Asian Inspired Massage Fusions
- Organic Facial Treatments
- Body & hair therapies
- Manicure & Pedicure
- Unique Spa rituals

EMPIRE
spa

1958 Caves Road
Yallingup

P 9755 2233
E spa@worldofempire.com
W www.empireretreat.com





eXperiences

A unique blend of beach, surf and fashion...

Evolution Surf is located in the heart of Dunsborough's shopping precinct... just next door to Artezen Cafe. With a unique product mix sourced from leading brands, Evolution Surf offers current fashion on trend for men, ladies, teens and kids.

We also stock all the gear you will need to cruise on a skateboard or catch that 'down south' wave. So whether you are heading to the beach, a barbeque, a winery or a festival, our team can help fit you out for the occasion.

You will find all your favourite brands including:

Seafolly • Insight • Havaianas • Mink Pink • Nike • Quiksilver • Stussy • Reef • Volcom • Oakley • Nixon • Deus • Electric • Rip Curl • Dragon • Lee • Rhythm • Burton • Otis • Rusty • 2 Chillies • Roxy • Vans • Element • O'Neill • Tallow • Zanerobe • Eve's Sister • The Lost Girls • Arbor and more!

If you are exploring the South West there is also an Evolution Surf store centrally located in the premier shopping hub in Bunbury.



Shop 3 Naturaliste Centre, Naturaliste Tce
Dunsborough

P 9755 3380

E dunsborough@evolutionsurf.com.au

W www.evolutionsurf.com.au





eXperiences

See something shiny and really exciting in Dunsborough

Indulge your senses with magnificent, individually designed jewellery from Nina's. Combine the brilliance of white, pink and champagne diamonds from Argyle, pearls from Broome and Western Australia's own pure gold.

These exceptional pieces are inspired by WA's unique qualities, from picturesque coastlines, stately Karri Forests, and unending rugged wilderness of the North West. Visit our South West showrooms and experience the exceptional elegance of Nina's for yourself. Our master craftsmen can create a stunning design to reflect your individual style and personality.

See why our designers have won major awards for excellence in craftsmanship, innovation and design.

DUNSBOROUGH • BUNBURY • KUNUNURRA

nina's 

Shop 14, Centrepont Shopping Centre
55 Dunn Bay Road
Dunsborough
P 9759 1366

125 Victoria Street
Bunbury
P 9721 7999
W www.ninasjewellery.com.au





eXperiences