

PLEASE DO NOT REMOVE
FROM THIS PROPERTY



eXperiences

COMPENDIUM 2014-2015



eXperiences

Experiences Compendium...

Inside the Experiences Compendium you will find a convenient compilation of businesses and the services they offer that will assist in ensuring your stay is filled with a range of impressive experiences. This region, stretching from Busselton to Augusta and beyond has a wealth of natural beauty for everyone to enjoy and you will discover a pictorial of some of these landscapes within the Experiences Compendium.

Take the time to fill your days with special experiences that will create lasting memories of this stunning holiday destination... happy holidays!



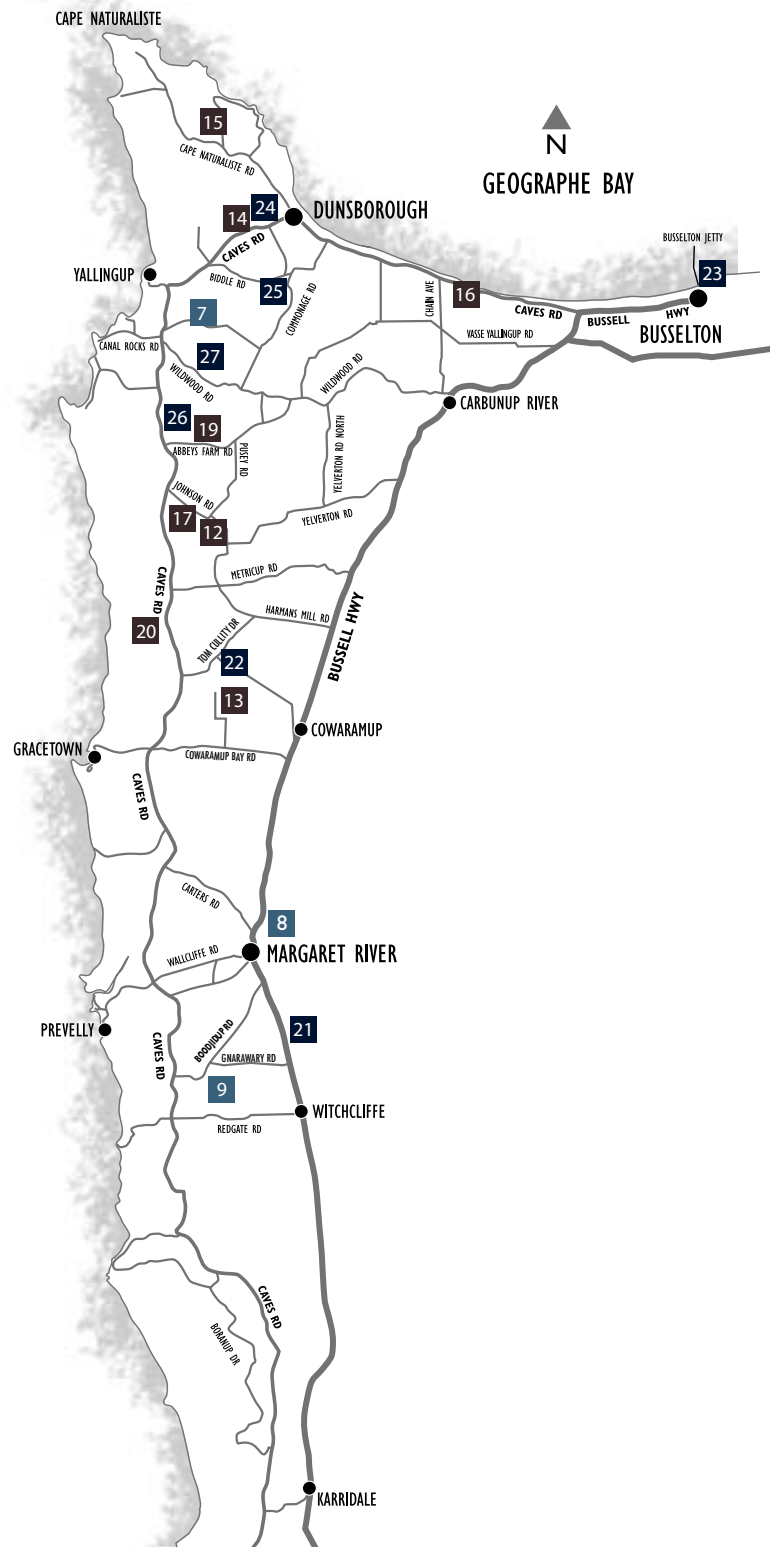
To ensure the next people staying in this wonderful accommodation are able to utilize the Experiences Compendium please treat it with care and do NOT remove it from the property. Thank you!

Contents...

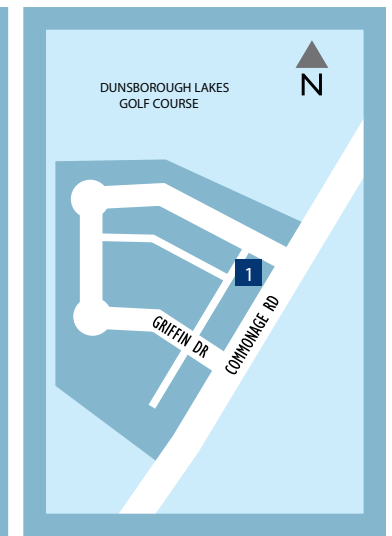
- LOCATION MAPS
- LIFESTYLE & SHOPPING
- ARTISANS
- FOOD TO GO
- BREWERIES, WINERIES & RESTAURANTS
- ATTRACTIONS & TOURS



eXperiences



Dunsborough Town Centre



Enterprise Park (LIA)

LIFESTYLE & SHOPPING

- 1 Boutique Eco
- 2 Ella Baché
- 3 Evolution Surf
- 4 Little Leisure
- 5 Realmark

ARTISANS

- 6 Christian Fletcher
- 7 Gunyulgup Galleries
- 8 Jahroc Galleries
- 9 Payet Gallery

FOOD TO GO

- 10 Squidlips
- 11 Tas's Bakery

BREWERIES, WINERIES & RESTAURANTS

- 12 Bootleg Brewery
- 13 Cape Grace Wines
- 14 Clancy's Fish Pub
- 15 Eagle Bay Brewing Co
- 16 Flametree Wines
- 17 Knee Deep in Margaret River
- 18 Piari & Co.
- 19 Wills Domain
- 20 Woodlands Winery

ACTIVITIES & TOURS

- 21 A Maze'n Margaret River
- 22 Bettenay's Margaret River Nougat
- 23 Busseton Jetty
- 24 Country Life Farm
- 25 Simmo's Ice Cream
- 26 Yallingup Maze
- 27 Yallingup Shearing Shed

Note: All maps shown are for illustration purposes only



eXperiences

LIFESTYLE & SHOPPING





eXperiences

Treat yourself to the touch of Australian Merino wool ...

• ◊ ✕ BOUTIQUE
eco

Boutique Eco - Open: 7 days

Boutique Eco is a gorgeous natural fibre experience. The fashion is exclusively all natural displaying bamboo, cotton, merino, cashmere, silk and other stunning textiles. Boutique Eco also has one of the largest selections of uggs in Australia with an extensive choice of styles and colours. Boutique Eco has essentials for your South West experience with beautiful scarves, sheep skins, cowskins, leather jackets and gorgeous fine leather handbags to spoil yourself.

Margaret River Concept Store:
Shop 2/101 Bussell Hwy,
Margaret River

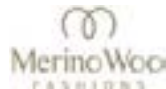
P 9758 8868
E shop@boutiqueeco.com.au
W www.boutiqueeco.com.au

Dunsborough Concept Store:
904 Commonage Road
Dunsborough

P 9759 1933
E shop@boutiqueeco.com.au
W www.boutiqueeco.com.au

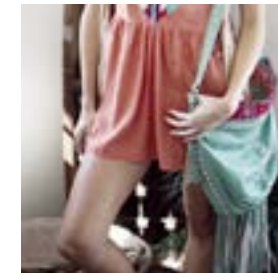
Yallingup Shearing Shed - Open: 7 days 10am - 4pm

The Yallingup Shearing Shed offers only the best Australian Merino Wool Fashions. With timeless style and beautiful quality in both men's and ladies luxurious fashion and uggs. The Yallingup Shearing Shed also offers live shearing and sheepdog shows. Bottle feeding the lambs is the highlight. Demonstrations are at 11am everyday, except Thursdays & Fridays and all of August.



1442 Wildwood Road
Yallingup

P 9755 2309
E shearingshed@westnet.com.au
W www.yallingupshearingshed.com.au





eXperiences

Ella Baché Dunsborough

Are you visiting down south for a 'well deserved' holiday? Let the experts at Ella Baché Dunsborough pamper you. Our highly skilled therapists are available for all your beauty needs.

Mention "Compendium Advertising" and receive 10% off any of the following treatments

Massages

Pamper Packages

Facials

Body Treatments

Spray Tans

Manicure • Pedicure • Shellac

Waxing • Make Up • IPL

Microdermabrasion • Oxygen Facials

Wedding Packages

5 private treatment rooms & a 4 bed Wedding Suite

Open Mon – Fri 9:00 am – 5:30pm

Saturday 9:00 am – 5:00 pm

Late appointments by arrangement

Sunday – Seasonal

Weddings at Ella Baché Dunsborough

Your wedding day is when your skin should look its absolute best. Healthy - glowing - flawless. A visit to Ella Baché Dunsborough is an experience for the entire bridal party.



Shop 2, 236 Naturaliste Tce
Dunsborough

P 9759 1662

E dunsborough@ellaexpress.com.au

W www.ellaexpress.com.au





eXperiences

A unique blend of beach, surf and fashion...

Evolution Surf is located in the heart of Dunsborough's shopping precinct... just next door to Artezen Cafe. With a unique product mix sourced from leading brands, Evolution Surf offers current fashion on trend for men, ladies, youth and kids.

We also stock all the gear you will need to cruise on a skateboard or catch a wave. So whether you are heading to the beach, a barbeque, a winery or a festival, our team can help fit you out for the occasion.

You will find all your favourite brands including:

Seafolly • Banks • Havaianas • Mink Pink • Nike • Quiksilver • Stussy • Reef • Volcom • Oakley • Nixon • Deus • Electric • Rip Curl • Dragon • Lee • Rhythm • Burton • Otis • Rusty • Roxy • Vans • Element • O'Neill • Tallow • Zanerobe • Eve's Sister • The Lost Girls • Arbor • TOMS • Arrow Divine • Critical Slide Society and more!

If you are exploring the South West there is also an Evolution Surf store centrally located in the premier shopping hub in Bunbury.

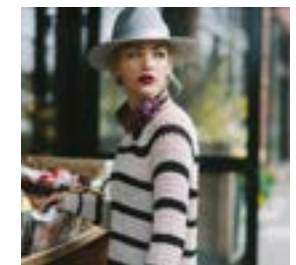


Shop 3 Naturaliste Centre, Naturaliste Tce
Dunsborough

P 9755 3380

E dunsborough@evolutionsurf.com.au

W www.evolutionsurf.com.au





eXperiences

Little Leisure... Live Learn Grow

Little Leisure is a boutique children's store stocking a unique range of educational toys, gifts, clothing, shoes and linen. We have a vast and stunning range of children's clothing from 0 -14 years.

We stock gorgeous timber toys, puzzles, outdoor games, craft and a variety of toys that will stretch the imagination of YOU and your children.

Little Leisure provides a great shopping solution for children. Whatever gift you need, be it a baby arrival, baby shower, birthday, Christmas or "just because" you are sure to find something in store. We also have a wonderful choice of fun things to spend pocket money on!

Open:

Dunsborough

Monday – Saturday: 9am – 5pm

Sunday & Public Holidays: 9am – 3pm (Winter: 10am - 4pm)

Cottesloe

Monday – Friday: 9am – 5.30pm

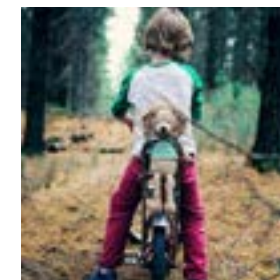
Saturday: 9am – 5pm

Sunday: 9am – 3pm (Winter: 10am - 4pm)



Shop 6/56 Dunn Bay Road
Dunsborough
P 9759 1488
E shop@littleleisure.com.au

17 Napoleon Street
Cottesloe
P 9284 4907
W www.littleleisure.com.au





eXperiences

WE LOVE Dunsborough, Yallingup, Eagle Bay...

Welcome to the jewel of Western Australia's South West.

The Cape Naturaliste region is the pinnacle of Western Australia's holiday playground destination. This stunning location has been the choice for national and international holiday makers for many years and features the very best of what W.A. has to offer; stunning turquoise bays, world renowned surf breaks, virgin hinterland, award winning vineyards and wineries, outstanding restaurants and galleries and a truly majestic coastline.

Realmark Dunsborough is privileged to be able to offer you a team of local specialists who are committed to helping buyers find their ideal home and holiday investment.

Our office specialises in residential property located in Dunsborough, Yallingup, Eagle Bay, Abbey, Vasse, Busselton and surrounding regions. Whether it's a beach house or a coastal rural tree change you are looking for, we can help you.

If you are considering purchasing a property, renting or would simply like to subscribe to our monthly E-Newsletter to view our latest listings and local events, please feel free to contact us.

Julie Fairclough
Brittane Gerrans

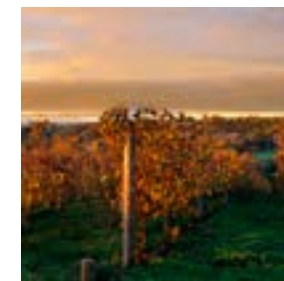
Sales Enquiries 0407 174 258
Rental Enquiries 9750 5598

We look forward to helping you achieve the classic laid back lifestyle you can only experience Down South...



Suite 4, The Cape Centre, 58 Dunn Bay Road
Dunsborough
P 9750 5598

E dunsborough@realmark.com.au
W www.realmarkdunsborough.com.au





eXperiences

ARTISANS





eXperiences

Fine Art Photography by Christian Fletcher

Christian's photography connects with the form, colour and light of Australia's extreme landscapes and has become centrepieces in homes across the world. Yet there's a tireless pursuit of perfection that keeps him testing new territory and embracing the boundless limits of technology.

"Photography is all about capturing an image. The art comes when that image has the power to move someone."

Christian's two showcase galleries in Dunsborough and Mandurah are a visual experience not to be missed. Whether you take a photograph home or just marvel at our beautiful country captured at its best, it will be one of the highlights of your stay.

2014 AIPP West Australian Landscape Photographer of the Year

2011 AIPP Australian Landscape Photographer of the Year

2011 AIPP West Australian Landscape Photographer of the Year

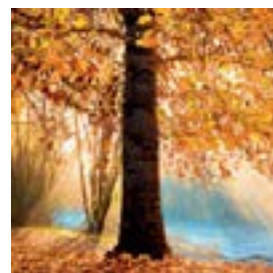
**Open: 7 days 9am - 5pm Monday to Saturday
10am - 4pm Sundays**

(Closed Christmas Day, Boxing Day and Good Friday).



Shop 4/27 Dunn Bay Road
Dunsborough

P 9759 1555
E gallery@christianfletcher.com.au
W www.christianfletcher.com.au





eXperiences

Gunyulgup Galleries

Gunyulgup Galleries, off Caves Road just south of Yallingup offers the opportunity for local, interstate and overseas visitors to view a diverse range of Western Australian art and design. Over 80 artists and craft persons are represented at any one time and displays of paintings, glass, sculpture, ceramics, jewellery and textiles are changing constantly.

Gunyulgup is an Aboriginal word meaning 'resting place near water'.

Since its inception in 1987 the gallery has won international recognition for presentation, quality and service.

Open: 7 days 10am - 5pm

Closed Wed & Thurs for May, June, July, August & September



Gunyulgup Valley Drive
Yallingup

P 9755 2177
E enquiries@gunyulgupgalleries.com.au
W www.gunyulgupgalleries.com.au





eXperiences



Jahroc Galleries the largest contemporary gallery in the South West

Jahroc Galleries is located in the main street of Margaret River down near the River with a beautiful Karri Forest as a backdrop. The gallery is home to Jahroc Furniture and also exhibits Fine Art, Glass, Sculpture, Ceramic, Fine Wood and Jewellery.

Jahroc Furniture have forged a reputation as Western Australia's leading furniture designer/makers with Gary Bennett and David Paris spending the last 26 years working together producing pieces that have been acquired by collectors around the globe. With over 50 industry awards the Jahroc design team are by far the most highly award furniture makers in Australia.

Jahroc Galleries boast an enviable stable of fine Australian artists such as Larry Mitchell, Shaun Atkinson, David Bromley, Jos Myers, Janine Daddo, Kyle Hughes-Odgers, Shannon Hamilton and Astrid Dahl plus a stable of over 60 other established and emerging Australian artists. Jahroc Galleries simply must be seen when visiting the Margaret River region.

Visit Jahroc Galleries in Margaret River today and find why all that do leave inspired.

Open 7 days 10am - 5pm



83 Bussell Highway
Margaret River

P 9758 7200
E info@jahroc.com.au
W www.jahroc.com.au





eXperiences

Payet Gallery

Located just five minutes from the township of Margaret River, Payet Gallery is a purpose built, working studio and gallery which showcases the remarkable hand crafted designs of the Payet brothers.

Exquisitely crafted, sophisticated designs accentuate the use of stunning gemstones such as peridot, tourmaline, garnets and diamonds and a luscious variety of pearls including Broome, Abrolhos Island and Tahitian pearls.

The jewellers are inspired by the organic shapes of nature found in the gallery's natural bush setting and our rugged coastline and incorporate precious stones and pearls into textured and polished gold and silver.

The Payets are happy to assist with requests for your special events including weddings and anniversaries.

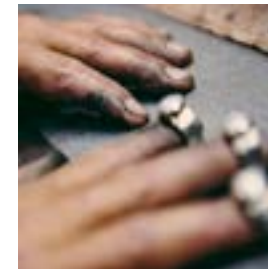
We look forward to welcoming you.

Open daily 10am - 4pm.



611 Boodjidup Road
Margaret River

P 9757 6885
E info@payetgallery.com.au
W www.payetgallery.com.au





eXperiences

FOOD TO GO





eXperiences

Squidlips

New Squidlips Margaret River - NOW OPEN

Squidlips have taken Fish 'n Chips to the next level, not only do we make the best fish'n'chips in the South West, but we have created a delicious Gourmet Twist menu for the more sophisticated palate. Try our marinated prawn & scallop skewers, home-made Thai fishcakes, tempura prawns or speciality Squid!

As our name suggests Squidlips specializes in squid; try yours lightly dusted in salt & pepper, lemon pepper, cajon spice or chilli seasoning! **DELICIOUS!!**

Local fish including: pink snapper, yellow fin whiting and gummy shark can be dusted in your favourite seasoning and grilled, or you may choose to have yours fried in our famous beer batter.

We use 100% RICE BRAN OIL which contains NO CHOLESTEROL and is filtered daily to ensure a healthier choice.

**Open: Summer and school holidays 7 days
Lunch 12 - 2.30pm and Dinner from 5pm Daily
(hours may vary in off peak periods)**

Squidlips Dunsborough
in the Coles complex
27a Dunn Bay Road
Dunsborough

P 9759 1799

Squidlips Margaret River
in the Target Arcade
118-121 Bussell Hwy
Margaret River

P 9757 9960



E squid.lips@yahoo.com.au
W www.squidlips.com.au

WA's TOP 5 FISH & CHIPS

Rated in the Top 5 Fish & Chips in WA by The Western Australian
(Source: West Weekend Magazine 01-11-2008)



High five Fish and chips
Who said the British do the best fish and chips? Not us. Here are five of WA's best.

Mountadam magic
The results of a makeover at Mountadam in South Australia's Eden Valley are evident in its new releases

Mountadam magic
The results of a makeover at Mountadam in South Australia's Eden Valley are evident in its new releases

Mountadam magic
The results of a makeover at Mountadam in South Australia's Eden Valley are evident in its new releases

Tasting Notes Mountadam

Mountadam magic
The results of a makeover at Mountadam in South Australia's Eden Valley are evident in its new releases

Mountadam magic
The results of a makeover at Mountadam in South Australia's Eden Valley are evident in its new releases

Mountadam magic
The results of a makeover at Mountadam in South Australia's Eden Valley are evident in its new releases

Squid Lips Dunsborough
Famous for its addictive chilli squid and salt and pepper squid, they also excel at sushi, tempura prawns, scallop skewers and gourmet salads. They offer a variety of fish from snapper to barramundi. Squid Lips is a great choice if you feel guilty about over-indulging but still want to watch the sunset over the ocean while feasting on seafood.

High five Fish and chips
Who said the British do the best fish and chips? Not us. Here are five of WA's best.

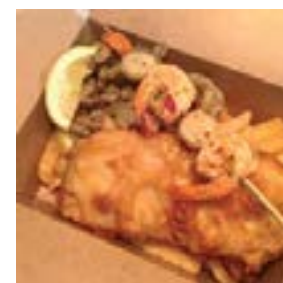
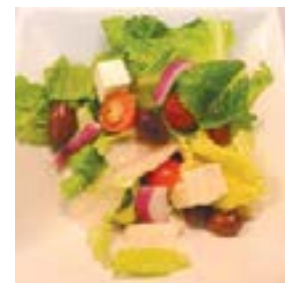
Mountadam magic
The results of a makeover at Mountadam in South Australia's Eden Valley are evident in its new releases

Tasting Notes Mountadam

High five Fish and chips
Who said the British do the best fish and chips? Not us. Here are five of WA's best.

Mountadam magic
The results of a makeover at Mountadam in South Australia's Eden Valley are evident in its new releases

Tasting Notes Mountadam





eXperiences

Tas's Bakery

For the finest quality foods!

- Award winning Pies • Pasties & Sausage rolls
- Family Pies • Quiches
- Salad & Gourmet Rolls • Croissants
- Hot Chips • Vegetarian options
- All pastries available cold to take home
- A wide range of Cakes with Fresh Cream
- Birthday Cakes made to order
- Slices, Donuts & Muffins
- Coffee, Tea & Hot Chocolate
- Cold drinks

Some of our current bread range includes Sour Dough, Continental, Turkish, Super Seed, Sunflower, Pumpkin & Apricot loafs, plus an assortment of rolls.

Catering for special events such as birthday parties and weddings is available.

We are located next to the Lions Park, in the centre of town.

Open: 7 days 6am - 5:30pm



Shop 18 Dunsborough Park Shopping Centre
Dunsborough

P 9756 7122
E tas@dunsborough.com





eXperiences

BREWERIES, WINERIES & RESTAURANTS





eXperiences

Bootleg Brewery

An Oasis of Beer in a desert of wine.

Open since 1994, Bootleg Brewery, situated in the heart of the Margaret River wine region, is a favourite to both visitors and locals alike. Set against a backdrop of pine trees and on the edge of a picturesque lake, Bootleg Brewery is a casual but yet scenic location to enjoy.

Our beers speak for themselves, having created a range of award-winning boutique beers to suit every palate. Bootleg Brewery also has a terrific reputation for creating some of the most distinctive seasonal beers. All our regular beers are bottled for purchase to take home.

Our restaurant is also well known for serving moderately-priced meals in a casual atmosphere, using only fresh locally grown produce. To enhance the vibe, we have live bands perform most weekends and a great playground for the kids to explore. With viewing windows into the brewery and brewing museum, Bootleg Brewery truly is an oasis of beer in a desert of wine.

Open: 7 days 11am to 6pm
Lunch from 12pm



Puzey Road, Cnr of Johnson Rd
Wilyabrup

P 9755 6300
E brewery@bootlegbrewery.com.au
W www.bootlegbrewery.com.au





eXperiences

Cape Grace Wines - One of the great little wineries.

The Cape Grace vineyard was planted in 1996 by Robert and Karen Karri-Davies whose family have been part of the south west since 1875. Robert is a great grandson of timber baron M.C. Davies who built the Cape Leeuwin Lighthouse and was a founder of Margaret River.

Cape Grace Wines is located on the headwaters of the Wilyabrup Valley in a natural bush setting. The single vineyard wines have earned an impressive array of medals, reviews and followers.

Traditional wine making is used, with the reds hand plunged and basket pressed. The vineyard is managed under organic principals and the limited release wines include the Cape Grace flagship Cabernet Sauvignon, a Cabernet Franc, an elegant Shiraz, a luscious Cabernet Shiraz, a complex wood aged Chardonnay, a dry Chenin Blanc and a delicious Cane Cut Chenin Blanc dessert wine.

Discover one of Margaret River's great little wineries during your visit. Meet Robert or Karen, enjoy the handcrafted wines, only available from the cellar door, while getting an insight into Cape Grace Wines.



281 Fifty One Road
Cowaramup

P 9755 5669
E info@capegracewines.com.au
W www.capegracewines.com.au





eXperiences

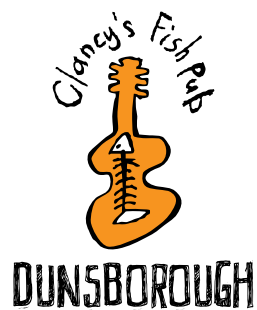
Clancy's Fish Pub, Dunsborough

Clancy's Fish Pub, on Caves Road just two minutes' drive from town, is perched on a hill, overlooking a tranquil lake surrounded by soaring gum trees and bushland. The pub, a simple design which allows it to take full advantage of the idyllic surrounds, has rapidly become a favourite of locals and tourists alike.

We are offering all the usual Clancy's fare including great hand crafted beer, superb fish and chips, regional wines, great entertainment and of course the casual family atmosphere and friendly service that you find in all the Clancy's Fish Pubs. Beautiful in summer, blazing fires in winter. There's always something happening at Clancy's Fish Pub Dunsborough, from festivals, functions, local and International entertainment or a movie in the Red Room. Check out our website for up and coming events.

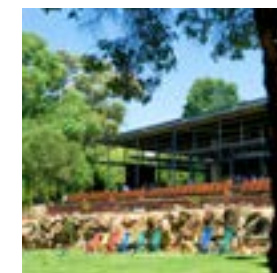
Keep your eyes open for our new breakfast opening hours during the summer months.

SUMMER and school holidays - open daily, 11am till late
WINTER - open Wednesday through Sunday, 12 noon till late



1710 Caves Road
Dunsborough

P 9750 5035
E dunsborough@clancysfishpub.com.au
W www.clancysfishpub.com.au





eXperiences

Eagle Bay Brewing Co.

100% handcrafted beer, no shortcuts!

Eagle Bay Brewing Co. is a family owned and operated restaurant located on a rural property overlooking Eagle Bay, only 5 minutes from Dunsborough.

Eagle Bay Brewing Co. offers a relaxed family-friendly environment for lunch, late lunch and all day grazing. Our range of handcrafted beer is made with rainwater, malted barley, hops and yeast (only).

Our Estate wines are made from the vineyards on the property. Restaurant fare includes wood fired pizzas, taste plates, fish and chips, gourmet burgers, salads and much more.

We offer a kids menu and we have a playground.

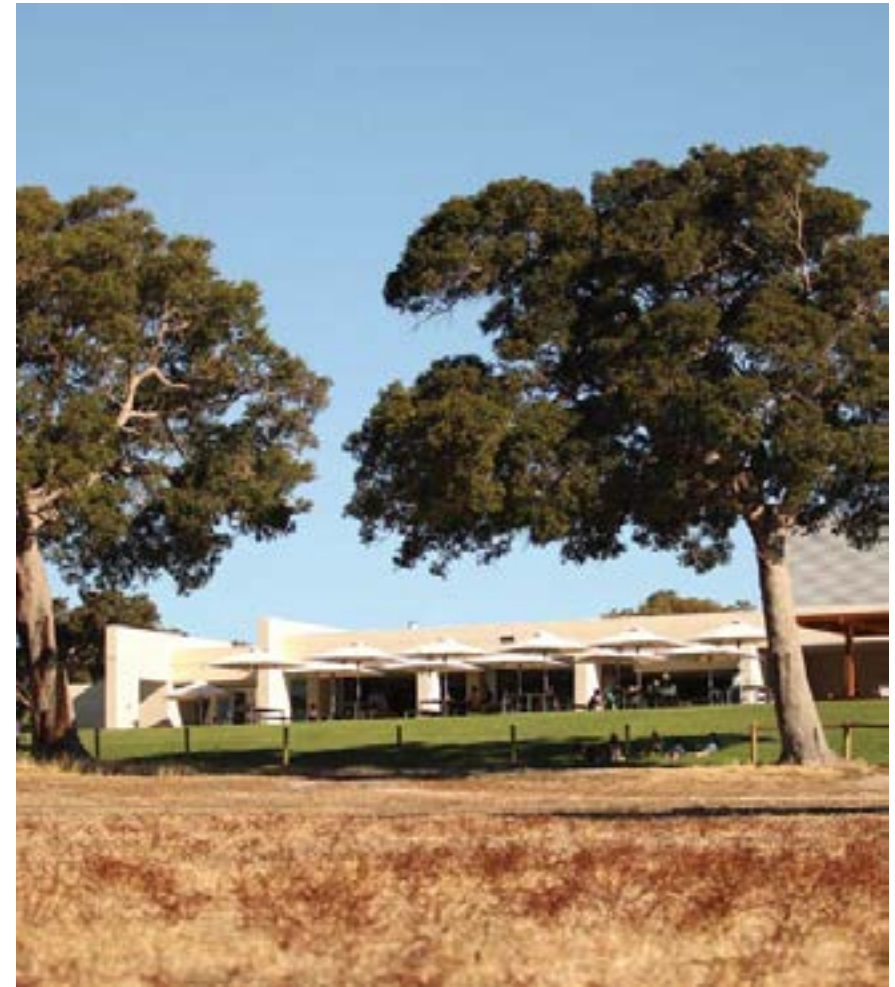
Open: 7 days for lunch / late lunch / all day grazing from 11am.

Bookings recommended!



252 Eagle Bay Road
Eagle Bay

P 9755 3554
E enquiries@eaglebaybrewing.com.au
W www.eaglebaybrewing.com.au





eXperiences

Flametree Wines

The welcoming and impressive Cellar Door building has a Hampton beach house style and is a must see when visiting the region.

Taste the array of award winning Flametree wines, browse the range of merchandise, then relax with a gourmet platter and a glass of wine. The friendly cellar door team offer a casual and relaxed wine tasting experience, with no pretension just the pleasure of exceptional wines.

The delectable selection of top shelf gourmet produce is available to take home or enjoy as you relax in the manicured gardens with friends and a glass of Flametree wine. Think home-made terrine with a chunky house chutney, shaved prosciutto, barrel-aged feta, locally sourced olives and a matured chevre or cheddar. The assortment of produce is designed and prepared by the much loved local chef, Tim Whitty. He is known for his ability to make wine-friendly flavoursome food, that's intended to be shared.

Cellar door is open daily 10am - 5pm and gourmet platters are served between 11am till 4pm. We welcome group bookings and private tastings with the winemaker, upon arrangement.

Open daily 10am - 5pm. Closed Christmas Day, Boxing Day, Good Friday & Anzac morning.



7 Chain Avenue, Cnr Caves Rd
Dunsborough

P 9756 8577
E info@flametreewines.com
W www.flametreewines.com.au





eXperiences

Knee Deep in Margaret River

Knee Deep Wines is located in Wilyabrup, the heart of Margaret River's premium wine growing region and has established itself as a 'not to be missed' destination.

The Knee Deep name reflects the passionate commitment to producing premium wines and creating contemporary Australian cuisine to give a memorable experience. It also reflects the laid back Margaret River state of mind in which visitors can immerse themselves when visiting our beautiful vineyard setting.

Enjoy a complimentary tasting of wines created by world renowned Winemaker Bruce Dukes, followed by lunch prepared by our award winning chef Ben Day and his passionate team. You can choose from our a la carte menu or opt for 'Trust the Chef', taking the choice out of your meal while our experienced staff guide you through this unique dining experience.

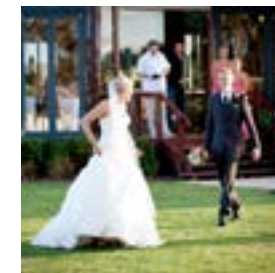
Knee Deep was a 2012 Gold plate winner for 'Best Restaurant within a Winery' and has also been awarded a star by Gourmet Traveller, a chef's hat by the Australian Good Food Guide plus a star by the West Australian Good Food Guide.

Open seven days for cellar door tastings, trust the chef and a la carte lunches. Weddings, dinners and other private functions by arrangement.



160 Johnson Road
Wilyabrup

P 9755 6776
E cellar@kneedeepwines.com.au
W www.kneedeepwines.com.au





eXperiences

Piari & Co.

“It is difficult to think anything but pleasant thoughts while eating a home grown tomato.”

- Lewis Grizzard

Owned and operated by husband and wife team Blair and Renee Allen, Piari & Co is a neighbourhood restaurant where the menu showcases the simplicity of local produce and changing seasons.

The kitchen food philosophy is about locally sourced, seasonal and house made produce combined to provide a cosy and welcoming dining experience. Designed for sharing and enjoying time together, the menu, bar and wine list are all about the small, rare and unusual as much as the treasured and simple.

We hope we can welcome you into an extension of our kitchen, feed you, show you a good time and... give you the bill.

The bistro is open for lunch from Tuesday until Friday and Dinner from Wednesday until Saturday.

We have separate gluten free, vegetarian, dairy free and kids menus available.

Bookings recommended!



5/54 Dunn Bay Road
Dunsborough

P 9756 7977
E dine@piariandco.com.au
W www.piariandco.com.au





eXperiences

Wills Domain

Wills Domain is a family friendly, architecturally spectacular venue combining a creative contemporary menu, highly acclaimed wines and a gallery featuring an eclectic mix of Australian artwork and handmade products from France.

At Wills Domain you can find out why we were voted WA's 2014 Regional Restaurant of the Year and hold a Red Five Star Halliday rating for our estate wines. So why not spoil that special someone, catch up with family or friends, hold your special event or even just come to enjoy a great coffee overlooking one of Margaret Rivers best valley views.

The restaurant is open for lunch seven days a week serving delectable modern Australian cuisine.

Restaurant reservations are simple to make via our website www.willsdomain.com.au or call 9755 2327.



Cnr Brash Road & Abbey Farm Road
Yallingup

P 9755 2327
E info@willsdomain.com.au
W www.willsdomain.com.au





eXperiences

Woodlands Winery

Woodlands vineyard was established in 1973 by David & Heather Watson on Caves Road in Wilyabrup, and was one of the first five vineyards to be planted in the Margaret River Wine Region. Woodlands remains owned and operated by the Watson family.

Woodlands vineyard is dry grown and maintained by hand using organic and traditional methods. Wines produced include Cabernet Sauvignon, Cabernet Merlot blends, and Chardonnay.

Woodlands Cabernet Sauvignon continues to garner awards and critical acclaim, including being listed in the Langtons Classification of Fine Wines.

The Woodlands Cellar Door places you in the heart of the winery- with sweeping views of the vineyard to the south, the winery to the west, and barrel hall to the north.

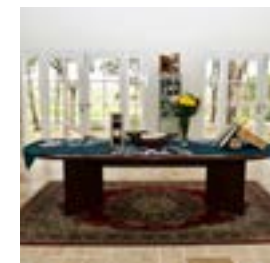
Located on the corner of Caves Road and Metricup Road, the Cellar Door is open daily. Gourmet Traveller Wine Magazine has named Woodlands as the best small Cellar Door sales experience in Margaret River.

Open: 7 Days 10am to 5pm



3948 Caves Road
Wilyabrup

P 9755 6226
E mail@woodlandswines.com
W www.woodlandswines.com





eXperiences

ACTIVITIES & TOURS





eXperiences

A Maze'n Margaret River: Giant hedge maze, gardens and mini golf

- A Maze'n ½ ha, 2 metre tall, Giant Hedge Maze now 20 years old
- A Maze'n 18 Hole Mini Golf
- A Maze'n 5 ha quirky gardens
- Some unusual and rare West Australian native plants
- A safe haven for our native birds
- Sheltered bbq's and picnic tables
- Playground
- More mazes, outdoor games and puzzles
- A Maze'n Café overlooking lake, maze and gardens serving breakfast and light lunches
- Great coffee from 5 senses
- Home made scones and cakes
- Indoor games and puzzles
- Wheelchair accessible
- Only 4km south of Margaret River township

Open Daily 9am - 5pm

(check website for mid winter opening hours)



9978 Bussell Highway
Margaret River

P 9758 7439
E findus@amazenmargaretriver.com.au
W www.amazenmargaretriver.com.au





eXperiences

Bettenay's Margaret River Nougat Company

Make sure you visit Margaret River's premier nougat factory for a not to be missed experience. View the nougat production process, learn the nougat history and taste this treat of treats.

Over 27 nougat flavour combinations from traditional Cranberry & Pistachio, Wildberry & Macadamia, to Sea Salted Caramel as well as a decadent chocolate coated range.

Whilst you are there be sure to taste their world exclusive Nougaretto (nougat cream liqueurs) - both Honey Almond and Coffee Almond flavours.

A vineyard established in 1989 produces single vineyard wines for tasting. All of this in a picturesque setting and part of a glorious Margaret River food hub.

The Bettenay family will give you a warm welcome.

Wine & Nougat Tasting Room

Open: 7 Days, 10am – 5pm
Closed Christmas Day



Cnr Tom Cullity Drive & Miamup Road
Cowaramup

P 9755 5539
E info@margaretrivernougat.com.au
W www.margaretrivernougat.com.au





eXperiences

Busselton Jetty: A world famous icon set over the stunning waters of Geographe Bay

Extending 1.8 kilometres over the protected waters of Geographe Bay, the heritage listed Busselton Jetty is the longest timber-piled jetty in the Southern Hemisphere.

Ride the Jetty Train

Sit back and relax while the train driver takes you on a 1.7 kilometre journey. With glimpses of dolphins frolicking, to spotting local fisherman snaring their catch of the day, the Jetty Train trip promises to deliver something for everyone.

Underwater Observatory

Board the Jetty Train and visit the Underwater Observatory. This unique building allows visitors to experience one of Australia's greatest artificial reefs.

Descend 8 metres to the ocean floor via a spiral staircase to discover an awe inspiring forest of vividly coloured tropical and sub-tropical corals, sponges, fish and invertebrates.

Eleven viewing windows at various levels within the observatory allows visitors to look out on some of the 300 marine species that live beneath the Jetty.

OPEN 7 DAYS. CLOSED CHRISTMAS DAY

Visitors can make bookings online via our website between October and April.

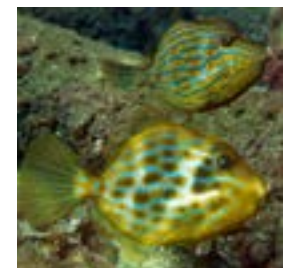
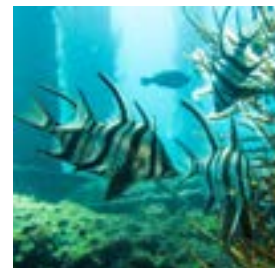
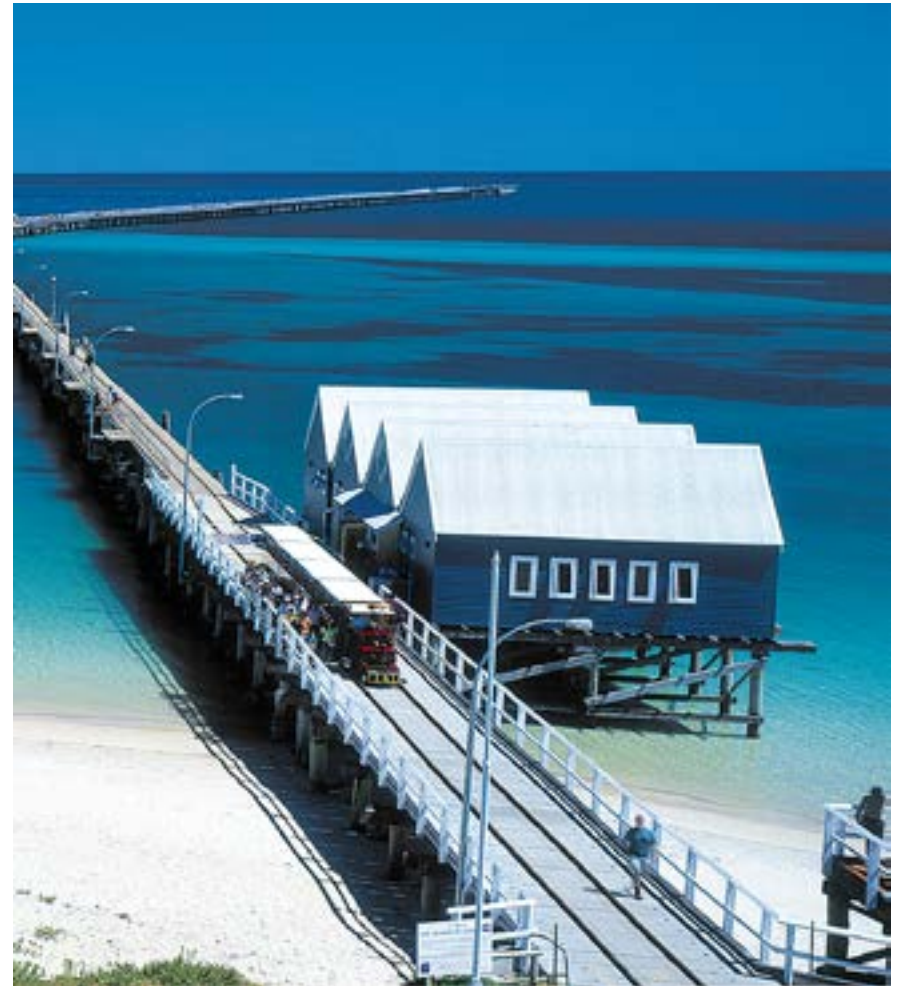


Busselton Beachfront

P 9754 0900

E bookings@busseltonjetty.com.au

W www.busseltonjetty.com.au





eXperiences

Country Life Farm

A fun day out for all ages!

Pay one entry fee and enjoy all the fun we have on offer.

NEW Indoor Play centre

• 0-18 months • 18 months – 4 years • 5 – 12 years

Country Life Farm

- Hand feed our friendly animals anytime of day
- Rabbits & guinea pigs, goats, sheep, llamas, alpacas
- Kangaroos, cows, ponies, donkeys and more...

Fun for everyone

- Giant Bouncy Castle
- Huge Inflatable slide
- Boat rides
- Merry go round
- Toddlers play area
- BBQ Facilities and shady picnic areas
- Free Tea & Coffee

We also have the NEW shoot & spin dodgem cars (additional cost).

Party bookings welcome!

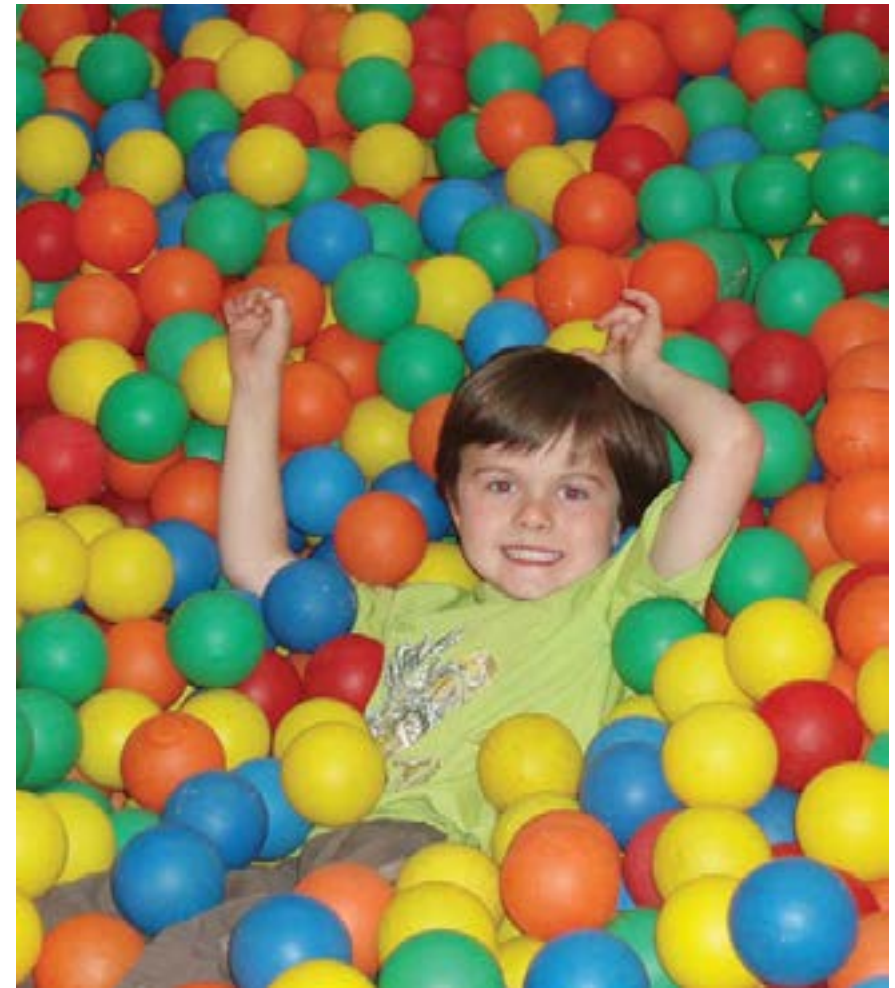
Drinks and icecreams are available.

Open: 7 days 9:30am - 5pm.



1964 Caves Road
Dunsborough

P 9755 3707
E farmerjohnno@msn.com
W www.countrylifefarm.com.au





eXperiences



Icecream, birthday parties, 18 hole mini golf course and much more...

Icecream, Wonderful icecream!

Magic happens when you take an ancient Irish recipe, the freshest ingredients from WA's Southwest and combine them with mad man Simmo and his odd socks.

It's a lethal combination for...delicious dilemmas!

Not only do we scoop the classic and traditional flavours of Vanilla, Chocolate, Strawberry and Rum and Raisin, but with a sense of adventure and fun new flavours are created; White Choc Maltease, Whiskey Prune, Apple Pie, and Burnt Caramel with a Salty Caramel Swirl. We never stop experimenting with new ideas.

Kids love to run free enjoying the expanses of grass, their imagination running wild and chatting with Edward the emu! The "grewed-ups" enjoy relaxing under our shady trees savouring their favourite delicious dilemma, sipping Yahava coffee, devouring hot waffles or sundaes.

Feeling energetic? Challenge the others to 18 holes of mini golf.

Pop in...we would love to see the taste buds dancing in your mouth.

Born Bred and Frozen in WA

Open: 7 days 10.00am – 5.00 pm



161 Commonage Road
Dunsborough

P 9755 3745
E delicious@simmos.com.au
W www.simmos.com.au



**DELICIOUS ICECREAM
FOR ALL AGES!**





eXperiences

Yallingup Maze Puzzle Cafe

Is all about having FUN!
Amusing for Everyone!
Entertaining your mind...
Exciting your senses...
Enjoy the experiences

- Accomplish the Ever Changing Maze
- Discover the secrets of decoding glasses
- Triumph over the tricky puzzles
- Delight yourselves playing hilarious board games
- Freshly ground coffee, juices, smoothies, milkshakes
- Delicious restaurant food, healthy or indulgent
- Fully licensed restaurant
- Spacious indoor café with plenty of seating
- Relax on the deck overlooking the lake vista
- Be enchanted in the natural playground
- Glimpse “Critters” in the trees
- Bouncy Castle (weather permitting)
- 8km south of Yallingup Beach

Open every day 9am - 5pm

Only closed Christmas Eve, Christmas Day, Boxing Day



3059 Caves Road
Yallingup

P 9756 6500
E lost@yallingupmaze.com.au
W www.yallingupmaze.com.au





eXperiences

Treat yourself to the touch of Australian Merino wool ...

• ◊ ⊗ BOUTIQUE
eco

Boutique Eco - Open: 7 days

Boutique Eco is a gorgeous natural fibre experience. The fashion is exclusively all natural displaying bamboo, cotton, merino, cashmere, silk and other stunning textiles. Boutique Eco also has one of the largest selections of uggs in Australia with an extensive choice of styles and colours. Boutique Eco has essentials for your South West experience with beautiful scarves, sheep skins, cowskins, leather jackets and gorgeous fine leather handbags to spoil yourself.

Margaret River Concept Store:
Shop 2/101 Bussell Hwy,
Margaret River

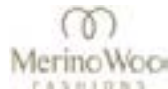
P 9758 8868
E shop@boutiqueeco.com.au
W www.boutiqueeco.com.au

Dunsborough Concept Store:
904 Commonage Road
Dunsborough

P 9759 1933
E shop@boutiqueeco.com.au
W www.boutiqueeco.com.au

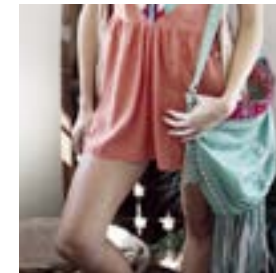
Yallingup Shearing Shed - Open: 7 days 10am - 4pm

The Yallingup Shearing Shed offers only the best Australian Merino Wool Fashions. With timeless style and beautiful quality in both men's and ladies luxurious fashion and uggs. The Yallingup Shearing Shed also offers live shearing and sheepdog shows. Bottle feeding the lambs is the highlight. Demonstrations are at 11am everyday, except Thursdays & Fridays and all of August.



1442 Wildwood Road
Yallingup

P 9755 2309
E shearingshed@westnet.com.au
W www.yallingupshearingshed.com.au





eXperiences