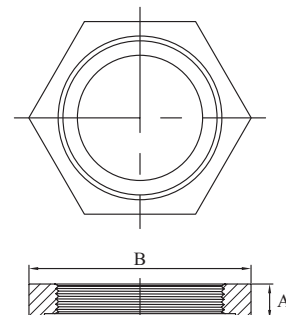


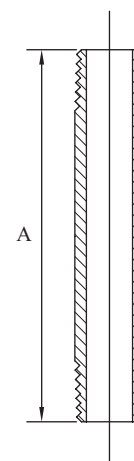
Galvanised Malleable Backnut

Galvanised Malleable Backnut				
AAP CODE	IMPERIAL SIZE	A	B	APPROX KG/PC
LBN15	1/2	8.1	30.0	0.03
LBN20	3/4	8.8	36.3	0.04
LBN25	1	9.9	44.5	0.06
LBN32	1-1/4	10.9	53.3	0.09
LBN40	1-1/2	12.1	59.7	0.11
LBN50	2	13.7	73.2	0.18
LBN65	2-1/2	16.0	90.1	0.29
LBN80	3	20.8	107.0	0.54
LBN94	4	23.7	136.0	1.06



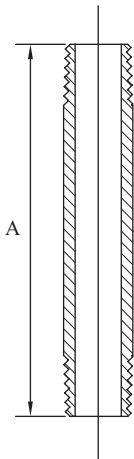
Galvanised Medium Pipe Pieces PE (BS 1387-85) Both Ends BSP Taper

Galvanised Medium Pipe Pieces PE (BS 1387-85) Both Ends BSP Taper			
AAP CODE	IMPERIAL SIZE	A	APPROX KG/PC
SPN0640G	1/8	40	0.05
SPN0660G	1/8	60	0.05
SPN0680G	1/8	80	0.07
SPN0694G	1/8	100	0.08
SPN0840G	1/4	40	0.03
SPN0850G	1/4	50	0.04
SPN0860G	1/4	60	0.05
SPN0875G	1/4	75	0.06
SPN0880G	1/4	80	0.06
SPN0894G	1/4	100	0.08
SPN08140G	1/4	140	0.11
SPN0896G	1/4	150	0.12
SPN1040G	3/8	40	0.04
SPN1050G	3/8	50	0.05
SPN1060G	3/8	60	0.06
SPN1075G	3/8	75	0.08
SPN1094G	3/8	100	0.10
SPN10140G	3/8	140	0.14
SPN1096G	3/8	150	0.15
SPN1540G	1/2	40	0.04
SPN1560G	1/2	60	0.06
SPN1580G	1/2	80	0.08
SPN1594G	1/2	100	0.10
SPN15120G	1/2	120	0.12
SPN15140G	1/2	140	0.14
SPN1596G	1/2	150	0.15
SPN1598G	1/2	200	0.20
SPN15X25G	1/2	250	0.25



AAP can also offer lengths according to customer's requirements - minimum order qty's may apply

Galvanised Medium Pipe Pieces PE (BS 1387-85) Both Ends BSP Taper

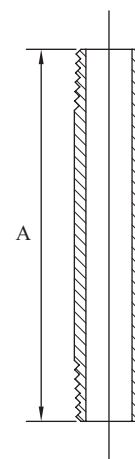


Galvanised Medium Pipe Pieces PE (BS 1387-85) Both Ends BSP Taper			
AAP CODE	IMPERIAL SIZE	A	APPROX KG/PC
SPN15X30G	1/2	300	0.30
SPN15X35G	1/2	350	0.35
SPN15X40G	1/2	400	0.40
SPN15X45G	1/2	450	0.45
SPN15X50G	1/2	500	0.50
SPN15X60G	1/2	600	0.60
SPN15X75G	1/2	750	0.75
SPN15X90G	1/2	900	0.90
SPN15X100G	1/2	1000	1.00
SPN15X122G	1/2	1220	1.22
SPN15X152G	1/2	1524	1.52
SPN15X183G	1/2	1829	1.83
SPN2060G	3/4	60	0.08
SPN2080G	3/4	80	0.10
SPN2094G	3/4	100	0.13
SPN20120G	3/4	120	0.16
SPN20140G	3/4	140	0.18
SPN2096G	3/4	150	0.20
SPN2098G	3/4	200	0.26
SPN20X25G	3/4	250	0.33
SPN20X30G	3/4	300	0.39
SPN20X35G	3/4	350	0.46
SPN20X40G	3/4	400	0.52
SPN20X45G	3/4	450	0.59
SPN20X50G	3/4	500	0.65
SPN20X55G	3/4	550	0.72
SPN20X60G	3/4	600	0.78
SPN20X75G	3/4	750	0.98
SPN20X90G	3/4	900	1.17
SPN20X100G	3/4	1000	1.30
SPN20X122G	3/4	1220	1.59
SPN20X152G	3/4	1524	1.98
SPN20X183G	3/4	1829	2.38
SPN2580G	1	80	0.17
SPN2594G	1	100	0.21
SPN25120G	1	120	0.25
SPN25140G	1	140	0.29
SPN2596G	1	150	0.32
SPN2598G	1	200	0.42
SPN25X25G	1	250	0.53
SPN25X30G	1	300	0.63
SPN25X35G	1	350	0.74
SPN25X40G	1	400	0.84
SPN25X45G	1	450	0.95
SPN25X50G	1	500	1.05
SPN25X55G	1	550	1.16

AAP can also offer lengths according to customer's requirements - minimum order qty's may apply

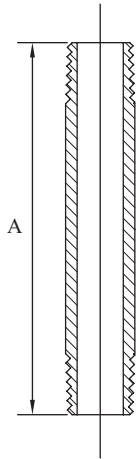
Galvanised Medium Pipe Pieces PE (BS 1387-85) Both Ends BSP Taper

Galvanised Medium Pipe Pieces PE (BS 1387-85) Both Ends BSP Taper			
AAP CODE	IMPERIAL SIZE	A	APPROX KG/PC
SPN25X60G	1	600	1.26
SPN25X75G	1	750	1.58
SPN25X90G	1	900	1.89
SPN25X100G	1	1000	2.10
SPN25X122G	1	1220	2.56
SPN25X152G	1	1524	3.20
SPN25X183G	1	1829	3.84
SPN3260G	1 1/4	60	0.14
SPN3280G	1 1/4	80	0.19
SPN3294G	1 1/4	100	0.24
SPN32140G	1 1/4	140	0.34
SPN3296G	1 1/4	150	0.36
SPN3298G	1 1/4	200	0.48
SPN32X25G	1 1/4	250	0.60
SPN32X30G	1 1/4	300	0.72
SPN32X35G	1 1/4	350	0.84
SPN32X40G	1 1/4	400	0.96
SPN32X45G	1 1/4	450	1.08
SPN32X50G	1 1/4	500	1.20
SPN32X55G	1 1/4	550	1.32
SPN32X60G	1 1/4	600	1.44
SPN32X75G	1 1/4	750	1.80
SPN32X90G	1 1/4	900	2.16
SPN32X122G	1 1/4	1220	2.93
SPN4060G	1 1/2	60	0.19
SPN4080G	1 1/2	80	0.25
SPN4094G	1 1/2	100	0.31
SPN40120G	1 1/2	120	0.37
SPN40140G	1 1/2	140	0.43
SPN4096G	1 1/2	150	0.47
SPN4098G	1 1/2	200	0.62
SPN40X25G	1 1/2	250	0.78
SPN40X30G	1 1/2	300	0.93
SPN40X35G	1 1/2	350	1.09
SPN40X40G	1 1/2	400	1.24
SPN40X45G	1 1/2	450	1.40
SPN40X50G	1 1/2	500	1.55
SPN40X60G	1 1/2	600	1.86
SPN40X75G	1 1/2	750	2.33
SPN40X90G	1 1/2	900	2.79
SPN40X100G	1 1/2	1000	3.10
SPN40X122G	1 1/2	1220	3.78
SPN5094G	2	100	0.41
SPN50120G	2	120	0.49
SPN50140G	2	140	0.57
SPN5096G	2	150	0.62



AAP can also offer lengths according to customer's requirements - minimum order qty's may apply

Galvanised Medium Pipe Pieces PE (BS 1387-85) Both Ends BSP Taper



Galvanised Medium Pipe Pieces PE (BS 1387-85) Both Ends BSP Taper			
AAP CODE	IMPERIAL SIZE	A	APPROX KG/PC
SPN5098G	2	200	0.82
SPN50X25G	2	250	1.03
SPN50X30G	2	300	1.23
SPN50X35G	2	350	1.44
SPN50X40G	2	400	1.64
SPN50X45G	2	450	1.85
SPN50X50G	2	500	2.05
SPN50X60G	2	600	2.46
SPN50X75G	2	750	3.08
SPN50X90G	2	900	3.69
SPN50X100G	2	1000	4.10
SPN50X122G	2	1220	5.00
SPN6580G	2 1/2	80	0.43
SPN6594G	2 1/2	100	0.54
SPN65140G	2 1/2	140	0.76
SPN6596G	2 1/2	150	0.81
SPN6598G	2 1/2	200	1.08
SPN65X25G	2 1/2	250	1.35
SPN65X30G	2 1/2	300	1.62
SPN65X45G	2 1/2	450	2.43
SPN65X60G	2 1/2	600	3.24
SPN8080G	3	80	0.39
SPN80120G	3	120	0.59
SPN80140G	3	140	0.69
SPN8096G	3	150	0.74
SPN8098G	3	200	0.98
SPN80X25G	3	250	1.23
SPN80X30G	3	300	1.47
SPN80X45G	3	450	2.21
SPN80X60G	3	600	2.94
SPN80X75G	3	750	3.68
SPN80X90G	3	900	4.41
SPN80X100G	3	1000	4.90
SPN9494G	4	100	1.03
SPN94120G	4	120	1.23
SPN94140G	4	140	1.44
SPN9496G	4	150	1.54
SPN9498G	4	200	2.05
SPN94X25G	4	250	2.57
SPN94X30G	4	300	3.08
SPN94X45G	4	450	4.62
SPN94X60G	4	600	6.16
SPN94X75G	4	750	7.70
SPN94X90G	4	900	9.24
SPN94X100G	4	1000	10.27
SPN95X30G	5	300	3.40
SPN95X60G	5	600	6.80

AAP can also offer lengths according to customer's requirements - minimum order qty's may apply