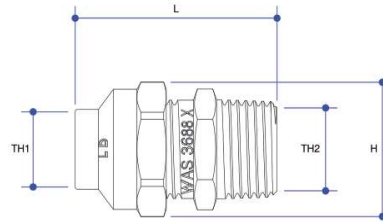
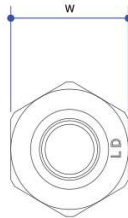


FLARED COMPRESSION

UNION MI X C

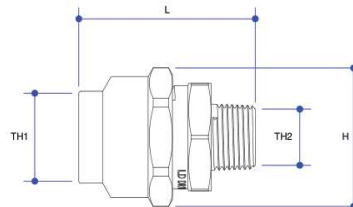


Working temperature 1°C to 95°C
Max. pressure rating 1600kPa

CODE	L	H	W	TH1	TH2	FINISH	UNIT	PKT	BOX
AW84	31	20	18	6C	R 1/4"	BR	EA	10	500
AW93	38	24	22	10C	R 3/8"	BR	EA	10	300
AW102	43	28	25	15C	R 1/2"	BR	EA	10	280
AW102NB	43	28	25	15C	R 1/2"	BR	EA	10	280
AW103	43	28	25	15C	R 1/2"	C/P	EA	10	280
AW111	52	35	32	20C	R 3/4"	BR	EA	10	160
AW111NB	52	35	32	20C	R 3/4"	BR	EA	10	160
AW119	54	43	38	25C	R 1"	BR	EA	10	100
AW125	68	47	47	32C	R 1 1/4"	BR	EA	5	50
AW125NB	68	47	47	32C	R 1 1/4"	BR	EA	5	50
AW130	71	58	55	40C	R 1 1/2"	BR	EA	10	40
AW134	73	71	66	50C	R 2"	BR	EA	5	25

*NB - NOT PACKAGED WITH BARCODE

UNION MI X C REDUCING



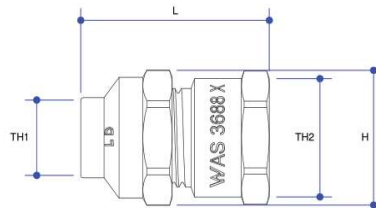
Working temperature 1°C to 95°C
Max. pressure rating 1600kPa

CODE	L	H	W	TH1	TH2	FINISH	UNIT	PKT	BOX
AW89	44	28	25	15C	R 1/4"	BR	EA	10	300
AW95	39	28	25	15C	R 3/8"	BR	EA	10	250
AW95NB	39	28	25	15C	R 3/8"	BR	EA	10	250
AW106	46	35	32	20C	R 3/8"	BR	EA	10	160
AW100	41	25	22	10C	R 1/2"	BR	EA	10	350
AW104	47	35	32	20C	R 1/2"	BR	EA	10	180
AW109	46	31	27	15C	R 3/4"	BR	EA	10	250
AW109NB	46	31	27	15C	R 3/4"	BR	EA	10	250
AW113	55	43	38	25C	R 3/4"	BR	EA	10	120
AW117	54	40	35	20C	R 1"	BR	EA	10	130

*NB - NOT PACKAGED WITH BARCODE

FLARED COMPRESSION

UNION FI X C

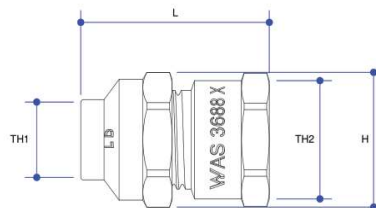


Working temperature 1°C to 95°C
Max. pressure rating 1600kPa

CODE	L	H	W	TH1	TH2	FINISH	UNIT	PKT	BOX
AW162	41	28	25	15C	Rp 1/2"	BR	EA	10	200
AW163	41	28	25	15C	Rp 1/2"	C/P	EA	10	200
AW170	46	36	32	20C	Rp 3/4"	BR	EA	10	160
AW170NB	46	36	32	20C	Rp 3/4"	BR	EA	10	160
AW176	53	43	38	25C	Rp 1"	BR	EA	10	100
AW182	58	51	47	32C	Rp 1 1/4"	BR	EA	10	70
AW182NB	58	51	47	32C	Rp 1 1/4"	BR	EA	10	70
AW182-1	62	58	55	40C	Rp 1 1/2"	BR	EA	10	60
AW182-2	71	72	67	50C	Rp 2"	BR	EA	10	30

*NB - NOT PACKAGED WITH BARCODE

UNION FI X C REDUCING



Working temperature 1°C to 95°C
Max. pressure rating 1600kPa

CODE	L	H	W	TH1	TH2	FINISH	UNIT	PKT	BOX
AW156	29	28	25	15C	Rp 3/8"	BR	EA	5	250
AW160	40	29	26	10C	Rp 1/2"	BR	EA	10	240
AW164	40	35	32	20C	Rp 1/2"	BR	EA	10	180
AW168	44	35	31	15C	Rp 3/4"	BR	EA	5	200
AW168NB	44	35	31	15C	Rp 3/4"	BR	EA	5	200
AW169	54	44	39	20C	Rp 1"	BR	EA	10	100
AW172	37	43	38	25C	Rp 3/4"	BR	EA	10	150

*NB - NOT PACKAGED WITH BARCODE

DISCLAIMER: AS PART OF AUSTWORLD COMMITMENT TO QUALITY PRODUCTS, AUSTWORLD RESERVES THE RIGHT TO ALTER THE DESIGN OR SPECIFICATION OF ITS PRODUCT WITHOUT NOTICE. THE PRODUCT IMAGES SHOWN ARE FOR ILLUSTRATION PURPOSES ONLY AND MAY NOT BEAN EXACT REPRESENTATION OF THE PRODUCT